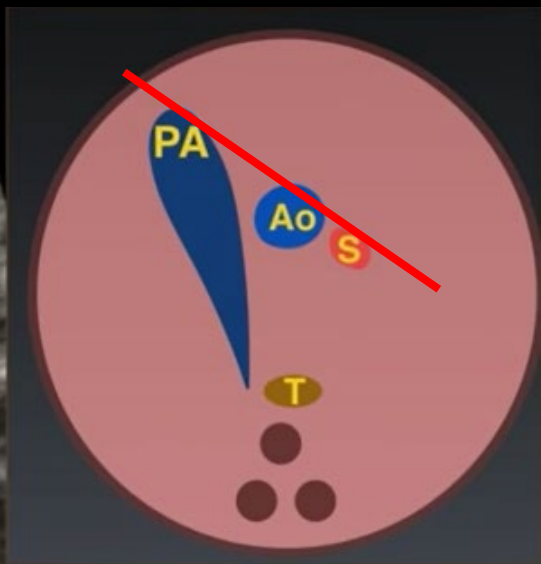
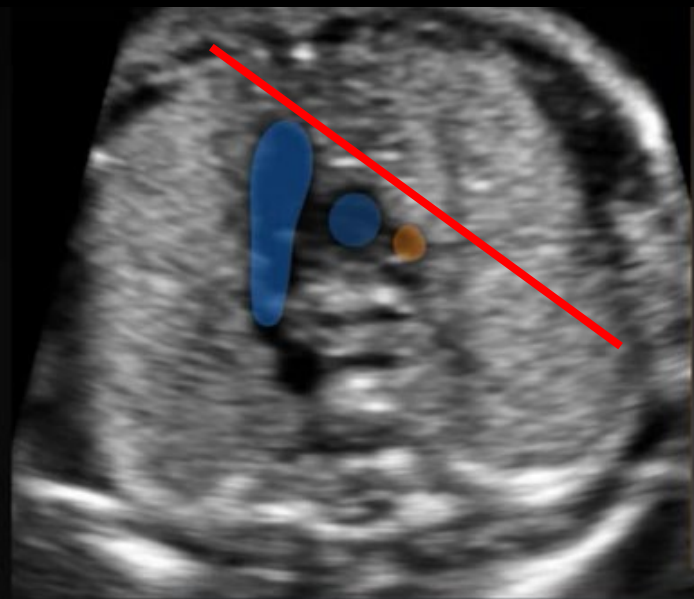


3 vessel tracheal view





3 vessel view

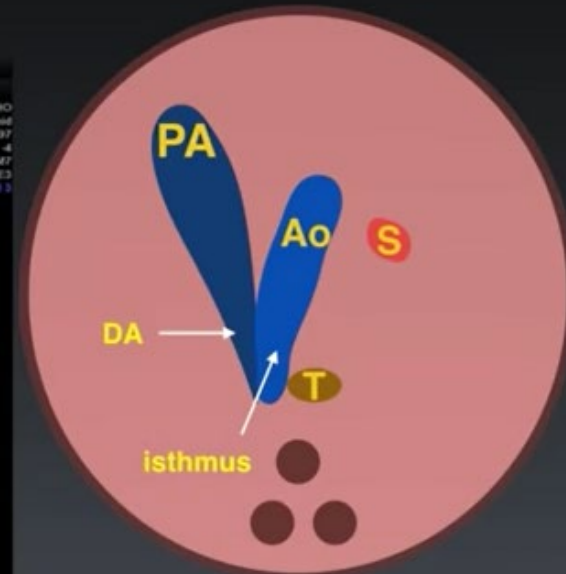


Main **P**ulmonary artery → Ductus arteriosus  
 Ascending aorta  
 Superior vena cava

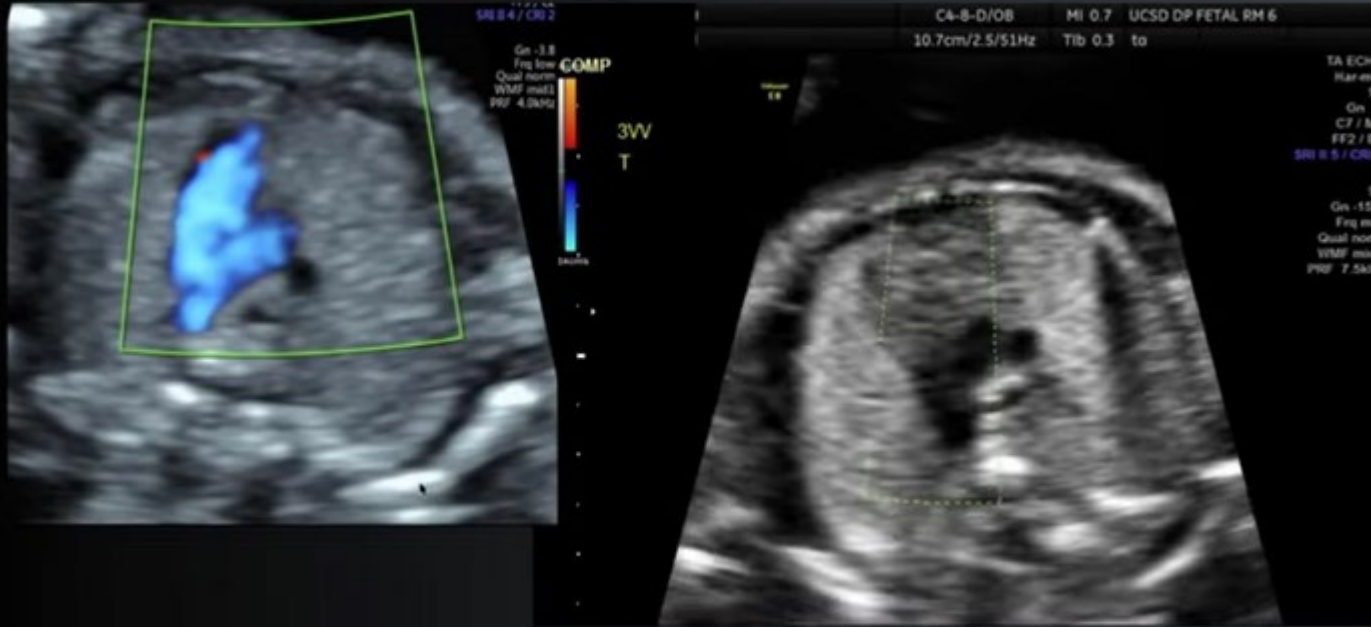
3 Vessel view



3VT - a few mm cephalad from 3VV



## 3VT what to look for: color Doppler



- Antegrade, laminar flow in both great vessels (towards the spine)
- Ductal arch and aortic arch meet to left of trachea

If you get color images this is what you look for – flow in the same direction. If the flow is in opposite direction, that signifies an abnormality.