

# ABDOMINAL AORTIC ANEURYSM SCREENING ULTRASOUND PROTOCOL (UAAA)

**\*\*This is a screening ultrasound for AAAs. Patients with known AAA should be seen through Vascular Ultrasound Department.**

**PATIENT PREP: No Prep**

## IMAGES TO OBTAIN

### ABDOMINAL AORTA:

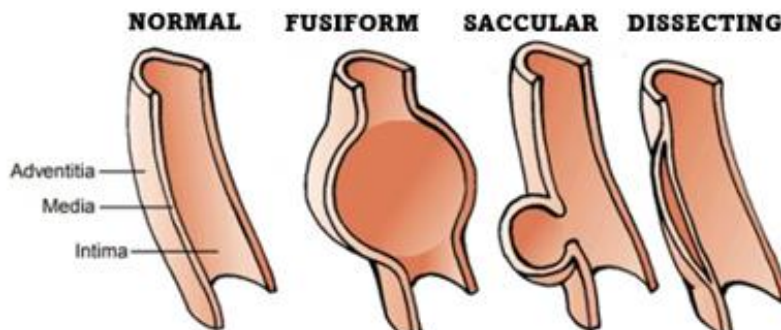
- Sagittal images with and without AP measurements (outer to outer):
  - Proximal aorta at level of below diaphragm, near the celiac artery
  - Mid aorta near level of renal arteries
  - Distal aorta at level of iliac bifurcation
- Transverse images:
  - Proximal aorta at level of below diaphragm, near the celiac artery
  - Mid aorta near level of renal arteries
  - Distal aorta at level of iliac bifurcation

### ILIAC ARTERIES:

- Transverse of the proximal common iliac arteries, just below the bifurcation
- Sagittal of right and left common iliac arteries, with and without AP measurements.

### IF ANEURYSM IS PRESENT:

- Document size of AAA – AP and width
- Evaluate for clot with **COLOR DOPPLER**.
- Determine where AAA is at or below the level of the renal arteries
- Comment on shape/type of aneurysm:



- Follow up recommendations:
  - For AAA size of 3.0–3.9 cm, follow-up every 3 years.
  - For AAA size of 4.0–4.9 cm, follow-up annually.
  - For AAA size of 5.0–5.4 cm, follow-up every 6 months.

***If unable to image aorta from anterior approach in supine position, patient should be scanned from a left lateral approach with patient in a decubitus position.***

### AAA PROTOCOL HISTORY

	Date	Changes made	By whom
Updated	03/2019		Becky Marion
Updated	10/11/22	ADDED: -“This is a screening ultrasound for AAAs. Patients with known AAA should be seen through the vascular lab.” -Types of AAA -Follow up parameters REMOVED: IVC images (not a AIUM or ACR requirement as of this date.)	Renee Betit Fitz