

ABDOMINAL AORTIC ANEURYSM SCREENING ULTRASOUND PROTOCOL

BILLING CODE: UAAA
PATIENT PREP: No Prep

****This is a screening ultrasound for AAAs. Patients with known AAA should be seen through Vascular Ultrasound Department.**

IMAGES TO OBTAIN

ABDOMINAL AORTA:

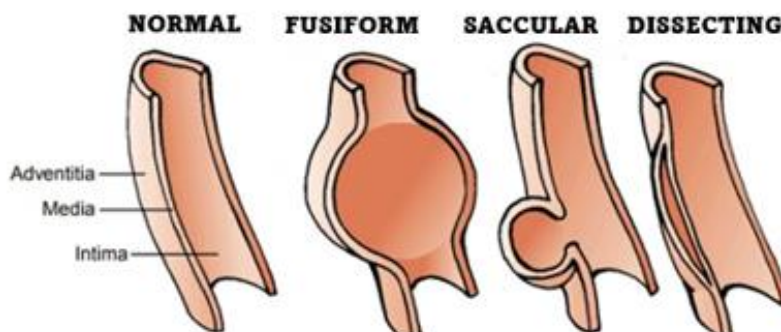
- Sagittal images with and without AP measurements (outer to outer):
 - Proximal aorta at level of below diaphragm, near the celiac artery
 - Mid aorta near level of renal arteries
 - Distal aorta at level of iliac bifurcation
- Transverse images:
 - Proximal aorta at level of below diaphragm, near the celiac artery
 - Mid aorta near level of renal arteries
 - Distal aorta at level of iliac bifurcation

ILIAC ARTERIES:

- Transverse of the proximal common iliac arteries, just below the bifurcation
- Sagittal of right and left common iliac arteries, with and without AP measurements.

IF ANEURYSM IS PRESENT:

- Document size of AAA – AP and width
- Evaluate for clot with **COLOR DOPPLER**.
- Determine whether the location of AAA is at or below the level of the renal arteries
- Comment on shape/type of aneurysm:



- Follow up recommendations:
 - 2.5-3.0 cm: Rescreening with radiology or vascular lab after 10 years.
 - 3.0-3.9 cm: Surveillance imaging at 3-year intervals with vascular lab
 - 4.0-4.9 cm: Surveillance imaging at 12-month intervals with vascular lab
 - 5.0-5.4 cm: Surveillance imaging at 6-month intervals with vascular lab

If unable to image aorta from anterior approach in supine position, patient should be scanned from a left lateral approach with patient in a decubitus position.

AAA ULTRASOUND IMAGE LIST

IMAGE	MODE
Aorta Prox Sag w/ measurement	2D +
Aorta Prox Trv / IVC Trans	2D
Aorta Mid Sag w/ measurement	2D+
Aorta Mid Trans	2D
Aorta Dist Sag w/ measurement	2D+
Aorta Dist Trv	2D
Iliac Arteries Trans	2D
Right Iliac Artery Sag	2D+
Left Iliac Artery Sag	2D+
<i>If AAA present:</i>	
<i>Measure AAA – AP and width</i>	<i>2D+</i>
<i>Evaluate for clot within w/ color</i>	<i>Color</i>

AAA PROTOCOL HISTORY

	Date	Changes made	By whom
Updated	03/2019		Becky Marion
Updated	10/11/22	<p>ADDED: -“This is a screening ultrasound for AAAs. Patients with known AAA should be seen through the vascular lab.” -Types of AAA -Follow up parameters REMOVED: IVC images (not a AIUM or ACR requirement as of this date.)</p>	Renee Betit Fitz
Added	4/15/2024	Image list	Renee Betit Fitz
Reviewed	5/23/2024	Updated follow up recommendations to match VP macro and Society of Vascular Surgery Guidelines	Protocol Meeting Attendees: Dr Dighe, Renee, Becky, Dalene, Vince