

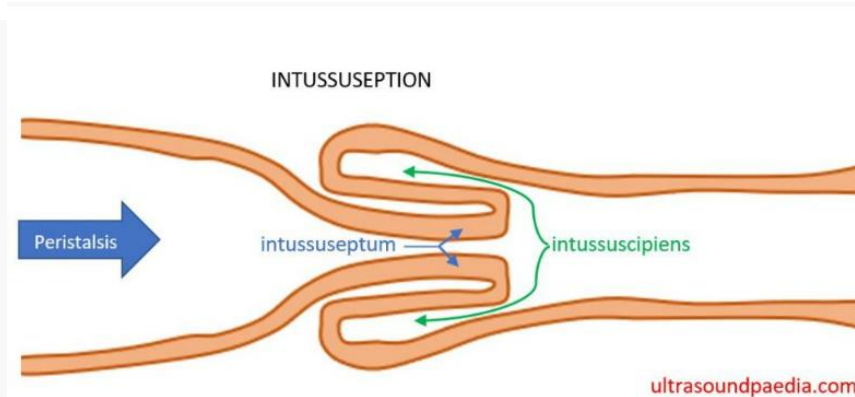
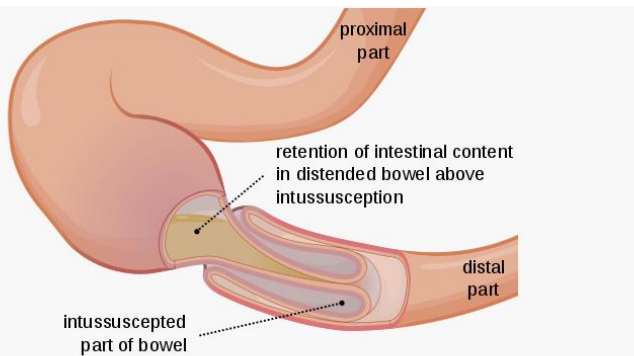
NEONATAL INTUSSUSCEPTION ULTRASOUND PROTOCOL

BILLING CODES: UABDL

PATIENT PREP: No prep

EQUIPMENT: eL18-4

INTUSSUSCEPTION is the telescoping of one part of bowel into another. Most often it involves the ileum telescoping into the cecum at the ileocecal junction, however, can occur anywhere in the bowel. Intussusception can lead to venous and lymphatic congestion and can lead to ischemia, necrosis, perforation, and sepsis if untreated. Intussusception is the most common cause of bowel obstruction in children under 2 years of age. Pain and vomiting are the most common presenting symptoms.



IMAGES TO OBTAIN

High frequency, linear transducer eL18-4 or higher to be used

- **BOWEL LOOPS IN ALL FOUR QUADRANTS and MIDLINE:**
 - If there is a palpable mass or painful focus, begin with scanning in that area.
 - Use gentle compression to displace bowel gas
 - Cine clip from superior to inferior of the RLQ, focusing on the ileocecal junction.
 - Cine clip in transverse from superior to inferior showing global view of each quadrant and the midline.
 - Assess for free fluid
 - Assess for mesenteric lymphadenopathy
- **IF AN AREA OF TELESCOPING BOWEL IS SEEN:**
 - Cine clip and still images of area of telescoping bowel.
 - Use color Doppler to assess bowel walls for decreased perfusion and bowel ischemia.
 - Measure the diameter of the area of telescoped bowel. Greater than 3cm is more likely to be ileocecal than small bowel intussusception.

REFERENCES:

- <https://www.acep.org/emultrasound/newsroom/apr2021/mastering-the-intussusception-ultrasound---tips-and-tricks/>
- <https://ultrasoundpaedia.com/intussusception/>
- <https://emedicine.medscape.com/article/930708-overview#a5?form=fpf>

NEONTAL INTUSSUSCEPTION IMAGE LIST

IMAGE	MODE
BOWEL - ALL FOUR QUADS & MIDLINE	
RLQ cine clip S-I for global view	Cine
RUQ cine clip S-I for global view	Cine
LLQ cine clip S-I for global view	Cine
LUQ cine clip S-I for global view	Cine
Midline cine clip S-I for global view	Cine
Assess for free fluid	
Assess for lymphadenopathy	
IF TELESCOPING BOWEL SEEN	
Cine clip showing telescoping bowel	Cine
Still image showing telescoping bowel	2D
Color flow of bowel wall perfusion	Color
Measure bowel diameter	2d+

Neonatal Intussusception Ultrasound Protocol History

	Date	Changes made	By whom
Created	10/16/2024		Manjiri Dighe Renee Betit Fitzgerald