

# FIRST TRIMESTER DETAILED ANATOMY

## CHALLENGE #4 Fetal Heart

### 1- FOUR CHAMBER VIEWS WITH AND WITHOUT COLOR

Cardiac position and axis

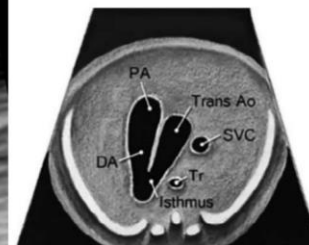


Four chamber view of the heart – with and without color flow



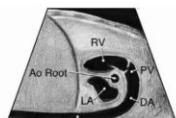
### 2- 3VT VIEW WITH COLOR, 2D NOT REQUIRED

3 vessel trachea view with color

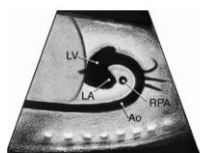
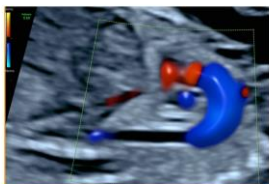


**3- OPTIONAL CHALLENGE IMAGES: ADDITIONAL VIEWS AS NEEDED, NOT REQUIRED ON ROUTINE EXAM** You can practice these as you choose, they are not required for the challenge, I am just mentioning them so you are aware it is sometimes part of the evaluation. We will primarily add these if a heart defect is suspected.

Sagittal ductal arch with color



Sagittal aortic arch with color



Cardiac angle measurement

