

FIRST TRIMESTER DETAILED ANATOMY

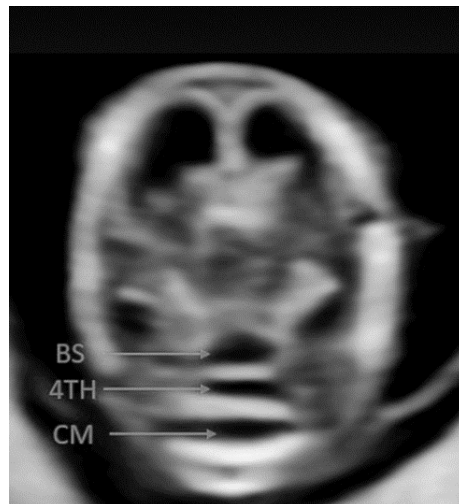
CHALLENGE SUMMARY

Challenge 1: 3 spaces images in sagittal and coronal

Sagittal: thalami-midbrain, brainstem, 4th ventricle (intracranial lucency), and cisterna magna

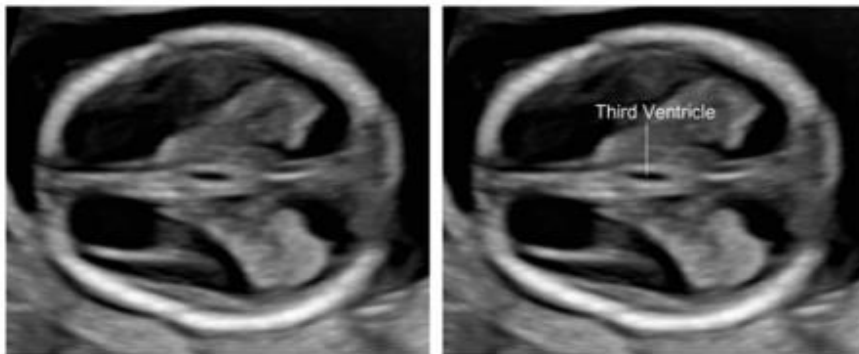


Coronal: Brain stem, 4th ventricle and cisterna magna

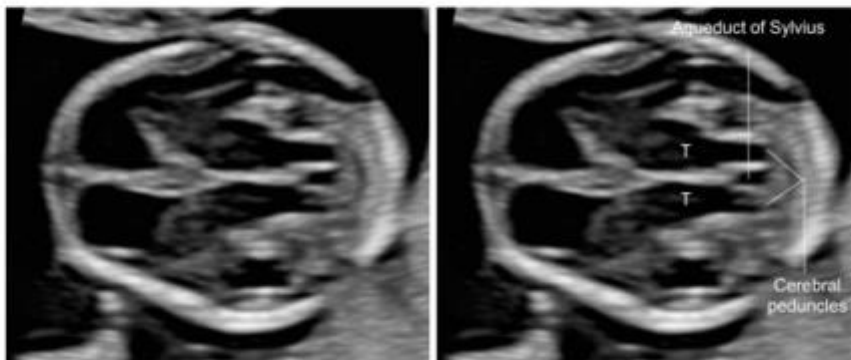


Challenge 2: Midline brain structures

Third ventricle



Transthalamic plane – thalami, cerebral peduncles, third ventricle and aqueduct of Sylvius



Posterior fossa



Challenge 3 : Facial structures

Sagittal maxilla



Retronasal triangle with ancillary bones



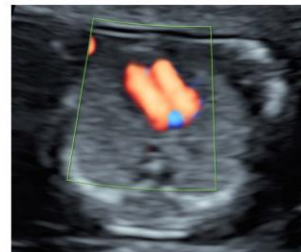
Challenge 4: Fetal Heart

1- FOUR CHAMBER VIEWS WITH AND WITHOUT COLOR

Cardiac position and axis

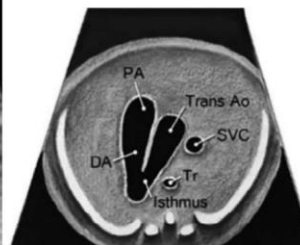


Four chamber view of the heart – with and without color flow



2- 3VT VIEW WITH COLOR, NOT REQUIRED

3 vessel trachea view with color

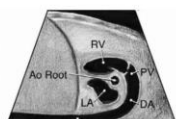


2D

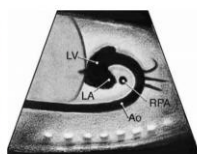
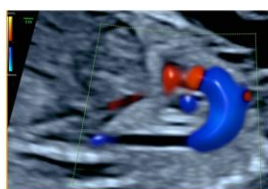
3- **OPTIONAL CHALLENGE IMAGES:** ADDITIONAL VIEWS AS NEEDED, NOT REQUIRED ON ROUTINE EXAM

You can practice these as you choose, they are not required for the challenge, I am just mentioning them so you are aware it is sometimes part of the evaluation. We will primarily add these if a heart defect is suspected.

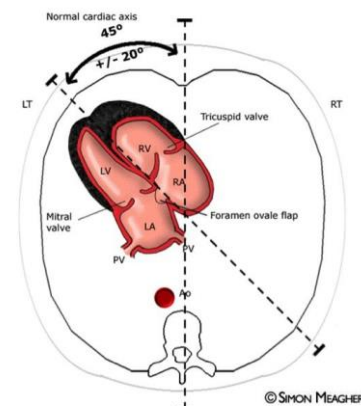
Sagittal ductal arch with color



Sagittal aortic arch with color



Cardiac angle measurement



© SIMON MEAGHER