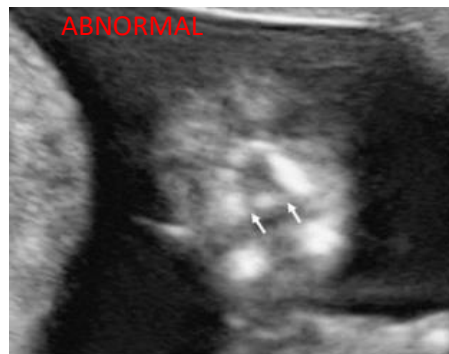


FIRST TRIMESTER DETAILED ANATOMY

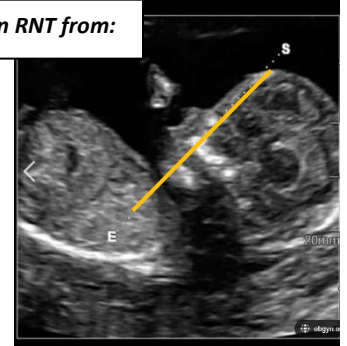
CHALLENGE #3 Facial Structures

- 1- THE RETRONASAL TRIANGLE (RNT)** will be found just posterior to the traditional nose and lips view. A cleft can often be detected in the primary palate from this view even in the first trimester!

Retronasal triangle with ancillary bones

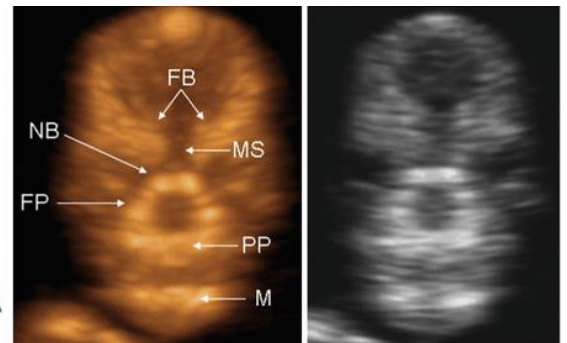
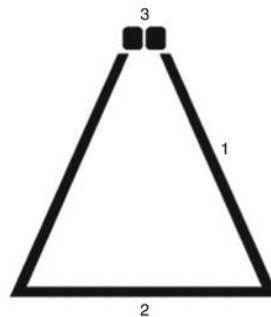


Angle to obtain RNT from:



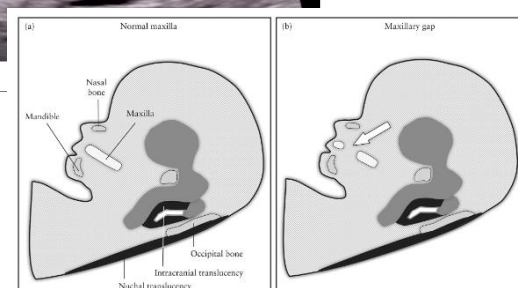
Retronasal triangle: 1 frontal process of the maxilla, 2 primary palate, 3 nasal bones.

FB frontal bones, MS metopic suture, NB nasal bones, FP frontal process of the maxilla, PP primary palate, M mandibular bone



- 2- THE MAXILLA IN THE PROFILE VIEW** is one we should be getting anyway, so hopefully we are already used to looking at it! If not, it's time to get comfortable with evaluating for maxillary gaps and start including a nice image of it in all of your studies.

Sagittal maxilla



ABNORMAL VIEWS WITH MAXILLARY GAP

