

SPECIMENS

**Ensure every container/vial are labeled with correct patient specimen label

Fluids (Ascites/Pleural effusion/body fluids)

- a) Microbiology testing: 20-30 mL syringe with red cap
- b) Biochemistry testing (protein, glucose, LDH, etc): 20-30 mL syringe with red cap



- c) Cytology non-GYN: Send 1 liter bottle (plastic Merit bottle or glass bottle) Red cap and close valve on the plastic bottle. Minimal of 100 ML is needed for cytology testing.



- d) EVAL HD fluid: 30 mL syringe with red cap



Tissue

- a) Pathology: formalin



- b) EVAL HD: At least one sample in RPMI and one sample into Formalin



- c) Microbiology: Cores on Telfa or into saline (squirt into blue top sterile container)



Native Renal Tissue:

- a) Three vials (Green top, Red Top, Blue Top): Tissue in each vial



Thyroid/Lymph node FNA Samples:

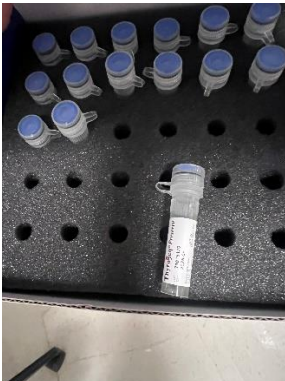
- a) Cytolyte: 22g needle on 10 mL syringe, do passes and squirt specimen into Cytolyte container. Suck up some Cytolyte fluid and push back out to “wash” out needle.



- b) Flow cytometry: 1 pass into RPMI tube



- c) Thyroseq



Sengine Testing:

Small box: Tissue

Large box: Fluid

