

# **UW faculty Demographics 1997-2011**

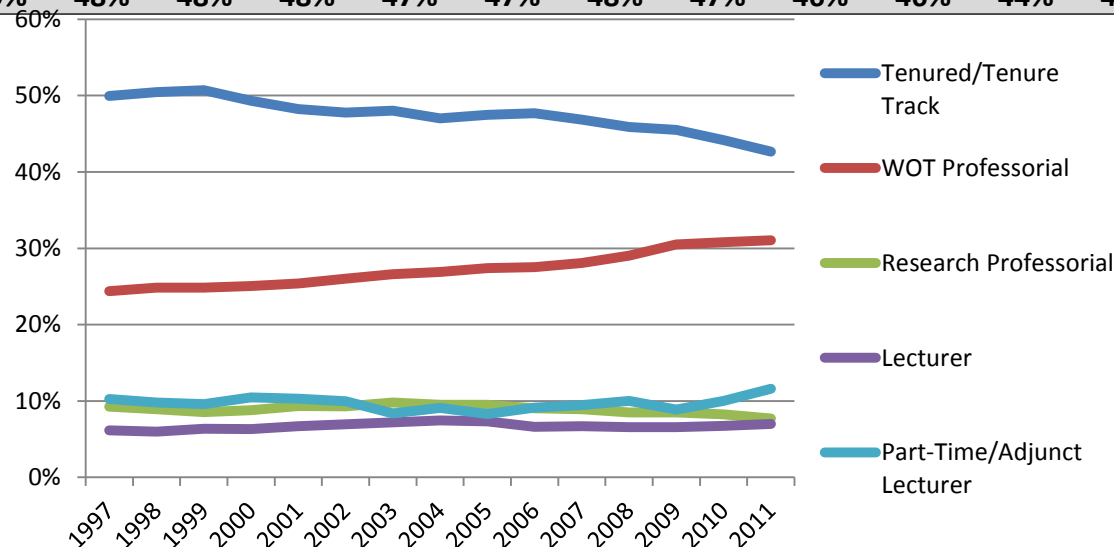
## **Selected charts**

These charts and tables are based on data collected by the Office of Planning and Budget, Employment Opportunity and Affirmative Action Office, and Human Relations Office. Marjorie Olmstead, Alexes Harris, Luis Fraga, and Jim Gregory produced the slides.

Please note that the charts are not fully consistent because of variation in job category definitions and because some report FTE, others faculty head counts.

# Core faculty\* by category, all campuses 1997-2011

Column1	1997	1998	1999	2000	2001	2002	2003	2004	2005	2006	2007	2008	2009	2010	2011
Tenure/Tenure Track	1822	1849	1901	1922	1918	1932	1940	1952	1976	2024	2033	2057	2045	2057	2026
WOT Professorial	889	911	931	977	1009	1053	1075	1117	1141	1169	1217	1301	1371	1435	1476
Research Professorial	338	327	320	343	372	376	395	395	395	384	387	381	382	385	365
Lecturers (full time)	225	219	238	247	267	281	290	309	304	280	290	295	296	313	333
Part-Time/Adjunct Lecturers	374	359	359	408	410	403	339	378	345	387	411	449	399	467	551
total	3648	3665	3749	3897	3976	4045	4039	4151	4161	4244	4338	4483	4493	4657	4751
% Tenure/Tenure Track	50%	50%	51%	49%	48%	48%	48%	47%	47%	48%	47%	46%	46%	44%	43%



# Core faculty by campus and School of Medicine 1997-2011

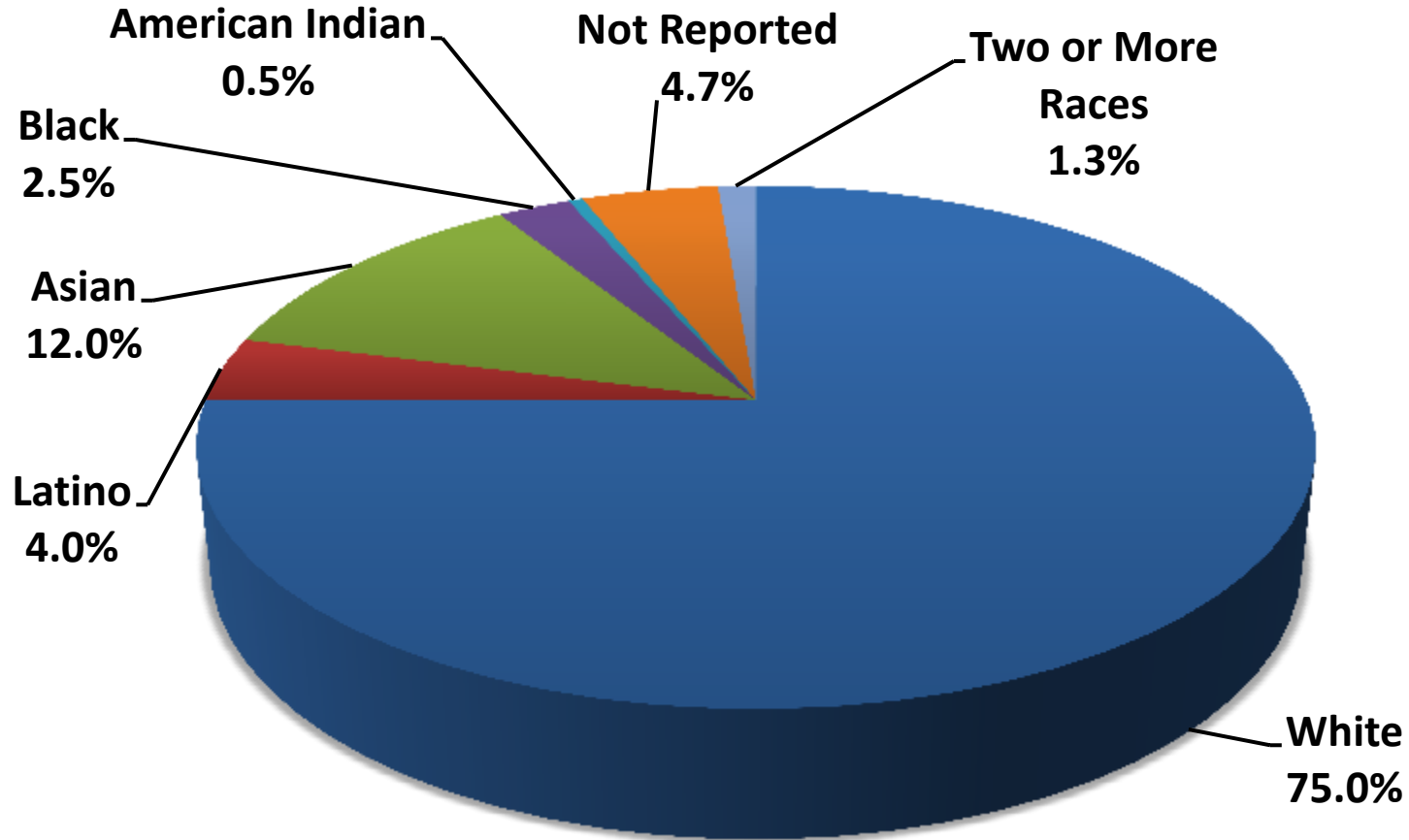
Bothell	1997	1998	1999	2000	2001	2002	2003	2004	2005	2006	2007	2008	2009	2010	2011
Tenured/Tenure Track	59%	66%	66%	61%	58%	61%	66%	63%	58%	64%	59%	55%	51%	51%	45%
WOT & Research	0%	0%	0%	1%	1%	1%	1%	0%	1%	1%	0%	2%	1%	1%	1%
Lecturers	41%	34%	34%	38%	41%	38%	33%	37%	41%	35%	41%	44%	47%	48%	54%

Tacoma	1997	1998	1999	2000	2001	2002	2003	2004	2005	2006	2007	2008	2009	2010	2011
Tenured/Tenure Track	47%	51%	59%	61%	64%	62%	72%	70%	72%	72%	64%	60%	64%	60%	56%
WOT & Research	1%	1%	1%	1%	1%	1%	1%	1%	1%	1%	1%	1%	1%	1%	0%
Lecturers	53%	49%	41%	39%	36%	38%	28%	30%	28%	28%	36%	40%	36%	40%	44%

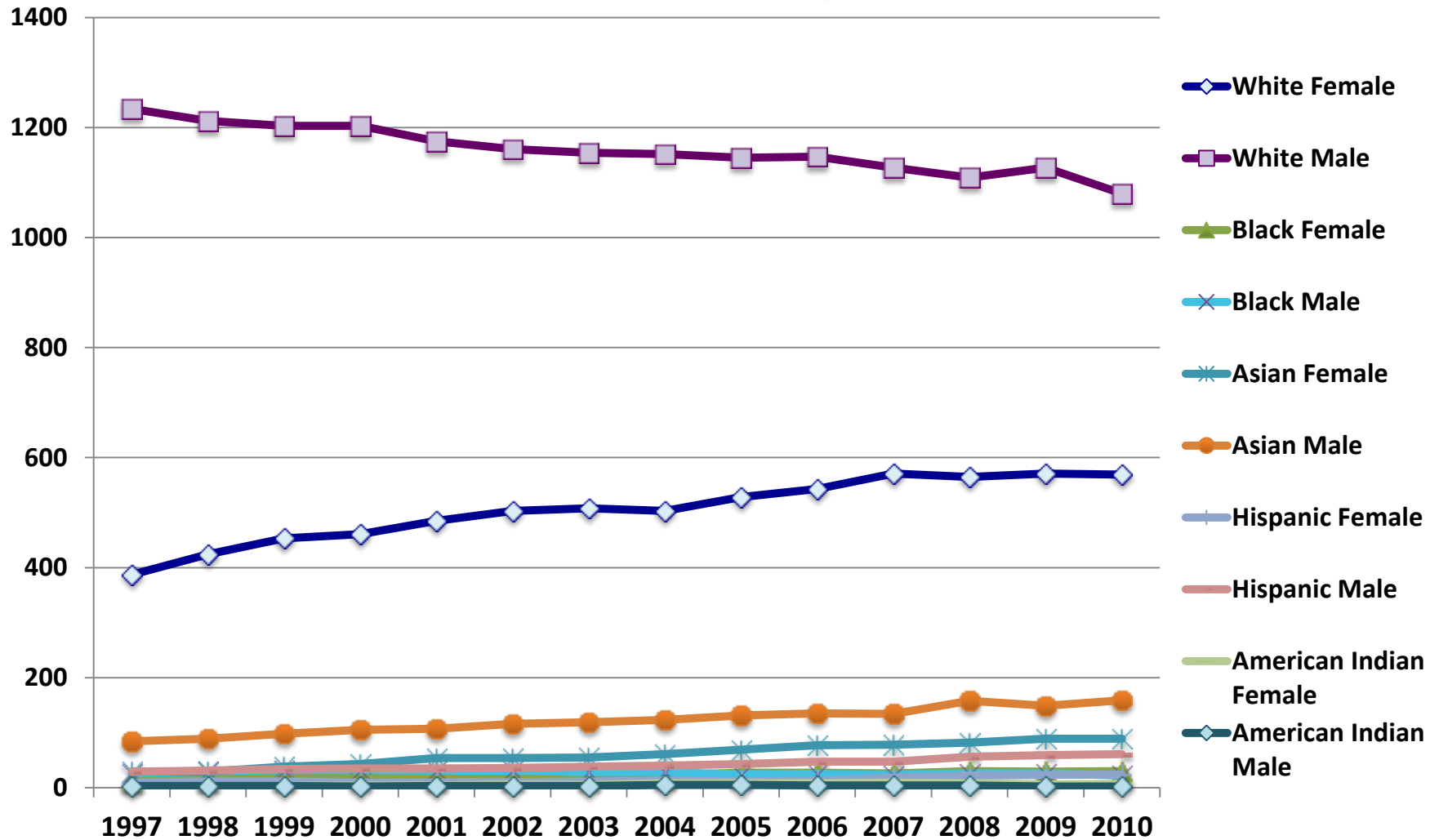
School of Medicine	1997	1998	1999	2000	2001	2002	2003	2004	2005	2006	2007	2008	2009	2010	2011
Tenured/ tenure track	20%	20%	19%	18%	18%	17%	17%	17%	17%	16%	16%	15%	14%	14%	13%
WOT Professorial	63%	64%	66%	67%	67%	67%	67%	67%	67%	67%	68%	70%	71%	71%	73%
Research	12%	10%	10%	10%	11%	11%	12%	12%	12%	12%	12%	12%	11%	11%	10%
Lecturers	5%	5%	5%	5%	5%	4%	4%	4%	4%	5%	4%	4%	4%	4%	4%

Seattle w/o Medicine	1997	1998	1999	2000	2001	2002	2003	2004	2005	2006	2007	2008	2009	2010	2011
Tenured/ tenure track	64%	65%	65%	64%	63%	63%	64%	63%	64%	65%	65%	65%	67%	65%	64%
WOT Professorial	6%	7%	6%	6%	5%	6%	6%	6%	6%	6%	6%	5%	5%	5%	5%
Research	9%	9%	9%	9%	9%	9%	9%	9%	9%	8%	8%	7%	7%	7%	7%
Lecturers	21%	20%	20%	22%	22%	22%	21%	22%	21%	22%	22%	22%	21%	22%	24%

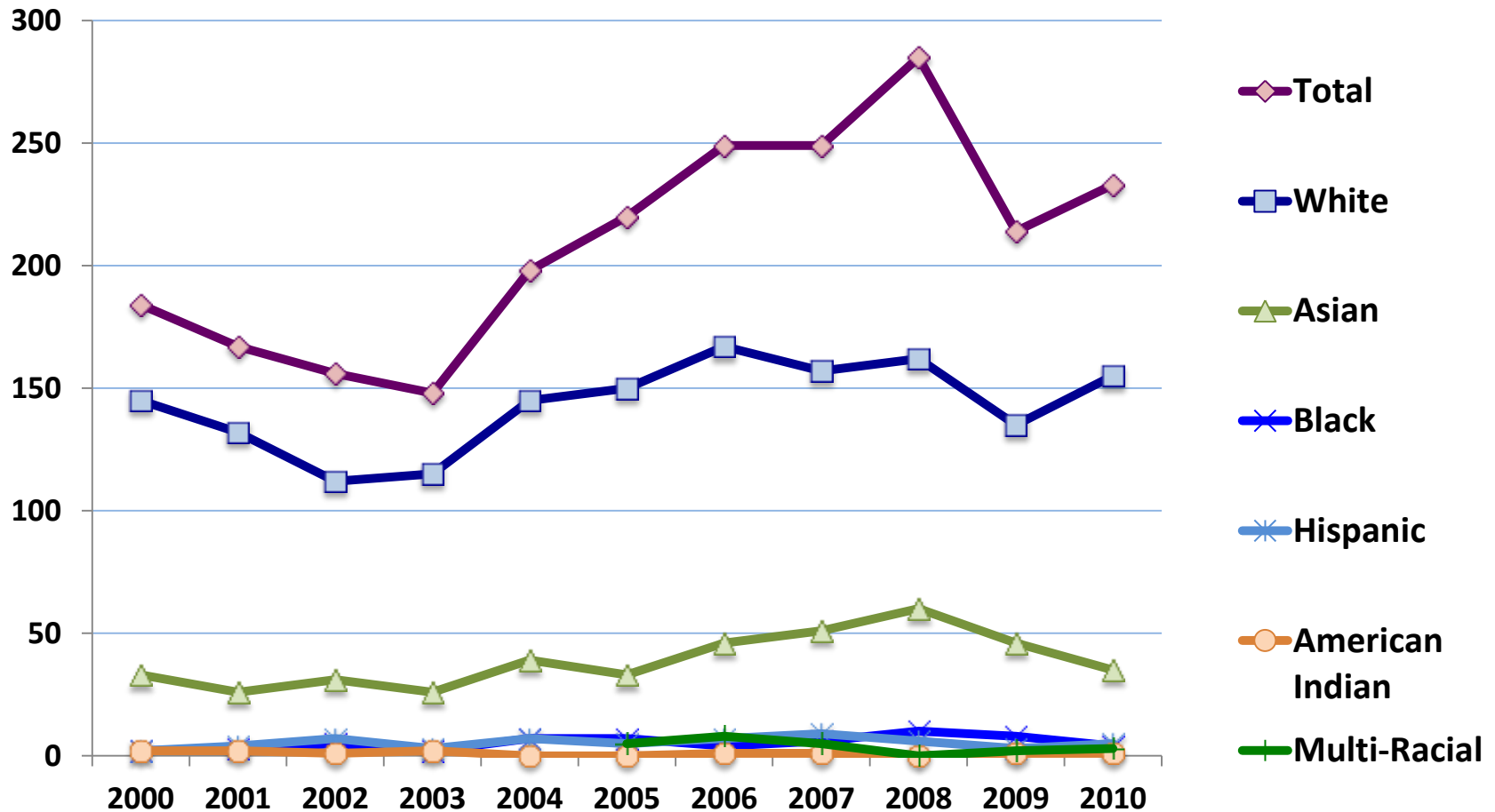
# Tenure/Tenure-Track Faculty, Fall 2011



# Change in Total Tenured and Tenure-Track Faculty, 1997-2010



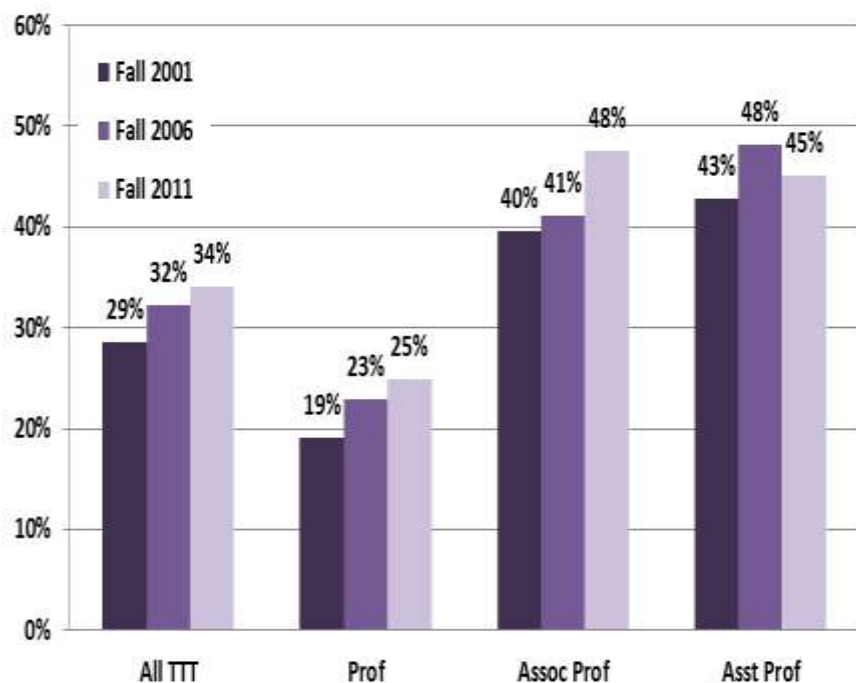
# Racial and Ethnic Distribution of New Faculty Hires, 2000-2010



# Gender by rank and by college, tenured/ tenure track faculty, UW Seattle 2011

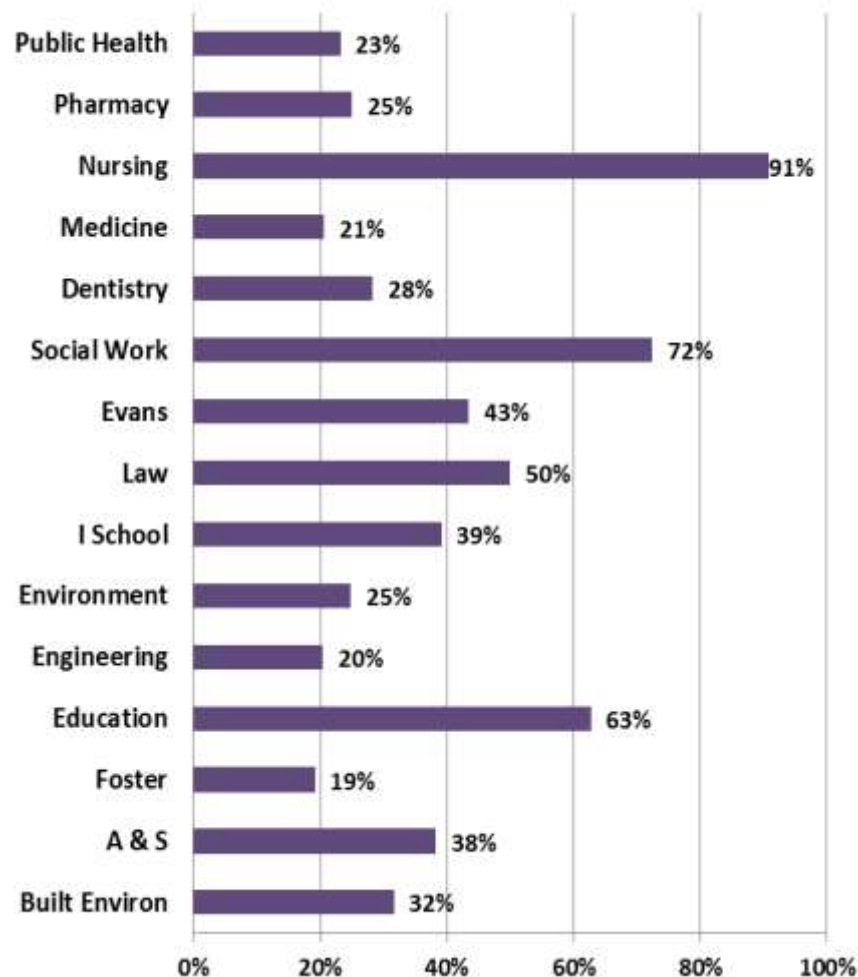
## By rank

UW Seattle Tenured/Tenure Track Faculty  
% Women



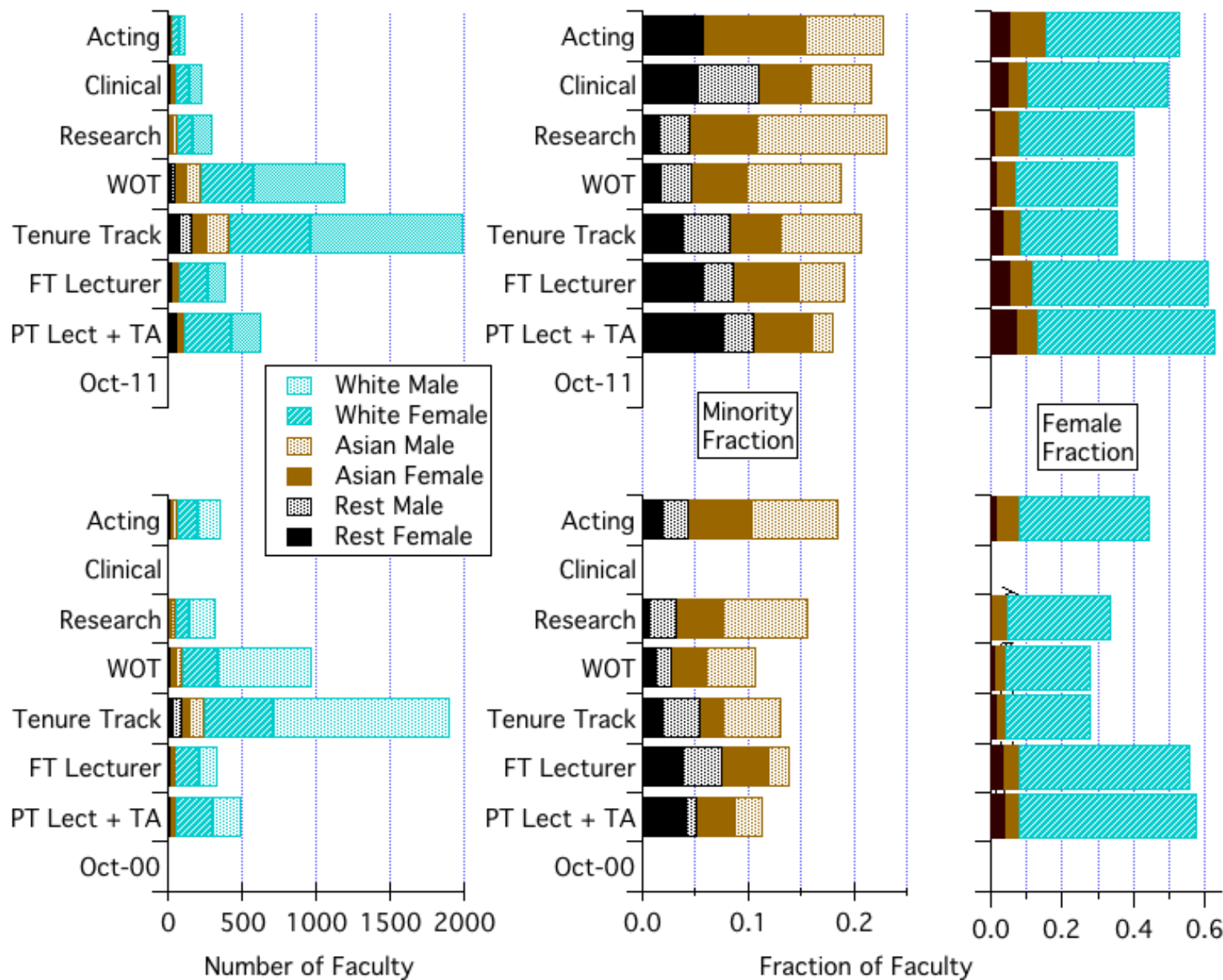
## By college/school

Fall 2011 Tenured/Tenure Track Faculty - % Women



# Faculty Demographics 2011 vs 2000

Source: UW Academic Workforce 2012 Affirmative Action Plan



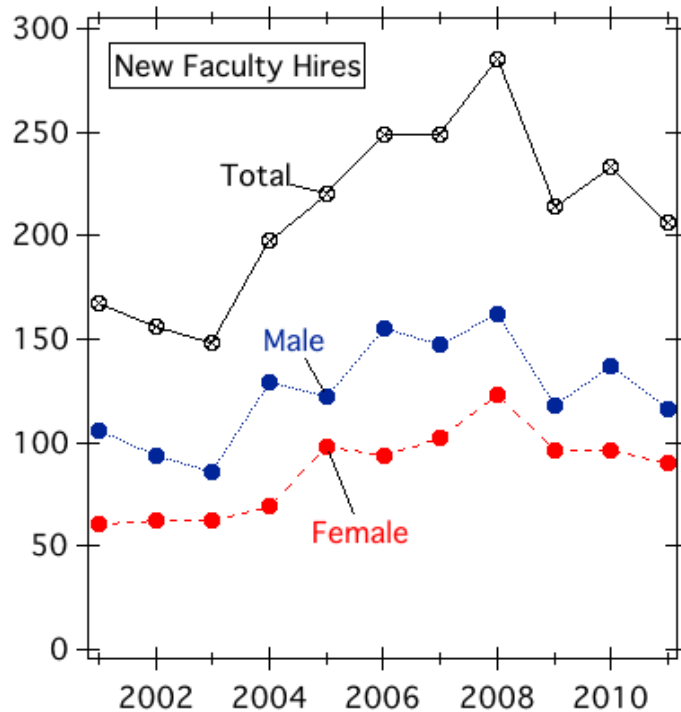


# Faculty New Hires

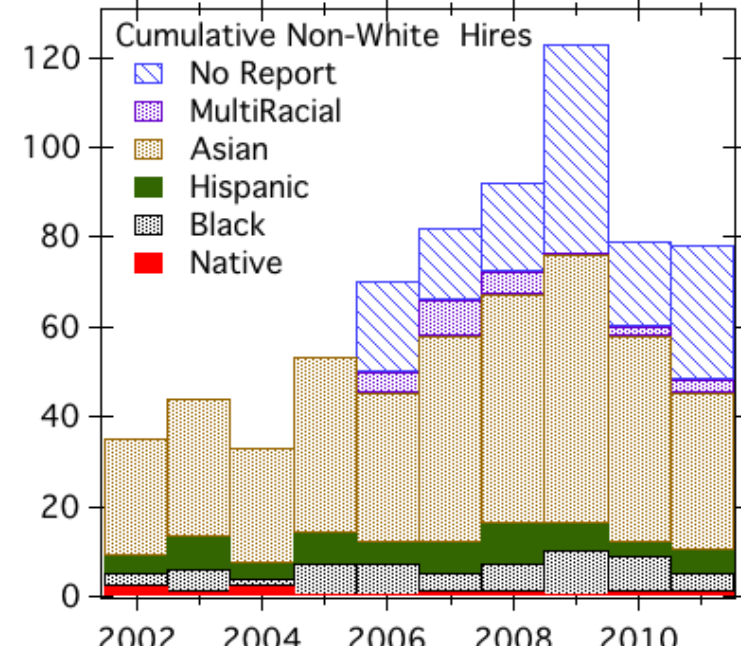
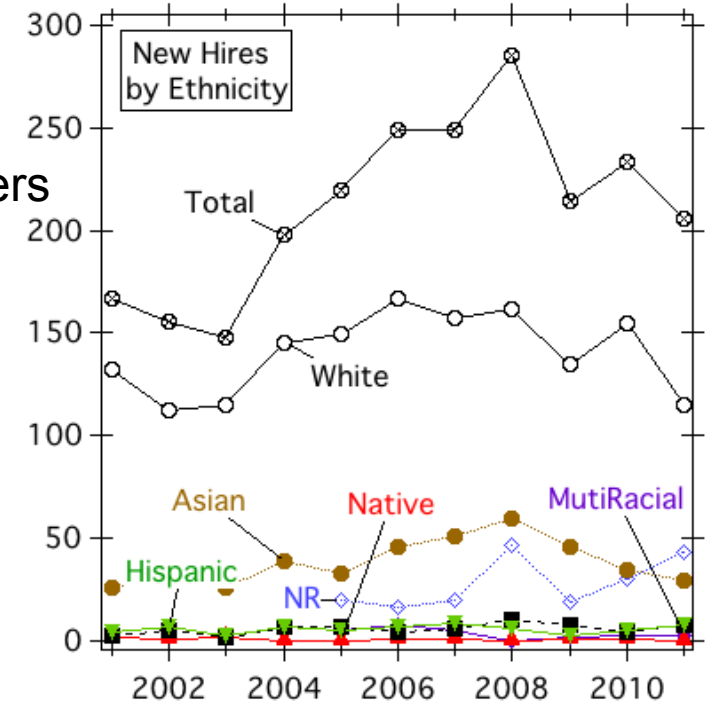
## 2001-11

Includes tenure track, WOT, research, full-time lecturers

### Gender Distribution (Number of Each)



### Ethnicity Distribution



# Career Satisfaction

Source: FCWA 2011 Report on Non-Ladder Faculty

