



# News & Notes

## Center Updates

### Portage Bay Clinic Renovation Underway!

We are excited to announce that renovations to the UW Autism Center Portage Bay Clinic began in June! We think that you will be delighted with the improvements that are in store, and we greatly appreciate your patience and understanding as the project progresses!



### Preparing for Fall with Autism Parenting Magazine

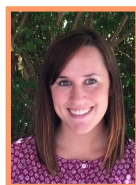


Highlighted in this month's issue of the [Autism Parenting Magazine](#), our Director Annette Estes Ph.D. and Behavior and Education Consultant Ashley Penney M.Ed., BCBA, highlight *The Value of Getting to Know Your Child's School Support Team*. We are glad to be part of this great new publication and hope that you find this piece helpful in planning for the upcoming school year!

## Clinic Updates

### New Additions to the Clinic Staff

A warm welcome to Madelyn Hogue, our newest registered behavior technician! Madelyn grew up in Edmonds, WA and is a recent graduate of Seattle Pacific University studying Psychology and Sociology. Madelyn has volunteered for several summers at Seattle Children's Hospital Stamm Camp, and has experience working with children with ASD using the Early Start Denver Model.



We are happy to have Jennie Kahl M.Ed., BCBA, join us at the UW Autism Center! Jennie has been providing services to individuals with autism spectrum disorder since 2004. A graduate of Rutgers University, she became a Certified Behavior Analyst in 2011. Jennie's areas of expertise include behavior and classroom management, skill acquisition programming, and staff training.



## Outreach Updates



### 2015 Annual Convention



### Save the dates October 8 - 10, 2015!

On **Friday October 11th** our Director Annette Estes Ph.D. and Assistant Professor in UW Speech & Hearing Sciences, Sara Kover Ph.D., will be presenting on *Early identification and intervention for autism* and *Language Development in Autism and Fragile X Syndrome* as part of the [WSLHA's Annual Convention](#) in Tacoma! We hope to see you there!

## Research Updates

### Identifying Biomarkers to Improve Autism Diagnosis

Featured in the [Seattle Times](#) last month, Raphael Bernier Ph.D., a UW Associate Professor of Psychiatry & Behavioral Sciences, Clinical Director of Seattle Children's Autism Center, and long-time member of the UWAC is an investigator in a new [National Institutes of Health research study](#). Hear Dr. Bernier's interview on [KUOW](#). This study is great news for our community!



### New Research Assistant Professor



We are pleased to welcome Jill Locke, Ph.D., to the UWAC! Jill is a Research Assistant Professor in UW Speech & Hearing Sciences. She completed her Ph.D. at UCLA and postdoctoral training at the University of Pennsylvania. Jill's research interests are in helping find effective ways to help children with autism spectrum disorder make friends and develop social abilities at school. She also studies how schools can keep social skills programs going over the longer term. Jill has conducted her research in the Los Angeles, Philadelphia, and New York public schools, and we are excited for the opportunity to add Seattle to the list!