

### Developing Leaders

As a central part of our mission, specialized training and mentoring opportunities are available for students, postdoctoral fellows, and professionals. Direct clinical experience and one-on-one supervision provide a high-quality training experience for future clinicians and researchers.



### Workshops and Seminars

We offer a variety of training workshops for parents and professionals during our annual summer institute. Our clinicians also provide training throughout the year for personnel at early childhood centers, hospitals, and other community organizations.

## **W** UW AUTISM CENTER UNIVERSITY of WASHINGTON

### Seattle Clinic

Center on Human Development & Disability  
Box 357920  
Seattle, WA 98195-7920  
Phone 206-221-6806  
Fax 206-598-7815

### Tacoma Satellite Clinic

Cherry Parkes Building  
1900 Commerce Street  
Box 358455  
Tacoma, WA 98402  
Phone 253-692-4721  
Fax 253-692-4718

### Email

[uwautism@uw.edu](mailto:uwautism@uw.edu)

### Website

<http://depts.washington.edu/uwautism>

### Toll-free Information and Resource Line

1-877-408-UWAC (8922)



*Photo credits:  
Joseph Jude  
Rolands Lakis  
Tiago Ribeiro  
John Watson*

## **W** UW AUTISM CENTER UNIVERSITY of WASHINGTON



### Clinical Services and Training



**Center on Human Development & Disability**

August 2010

**The UW Autism Center** is the largest nonprofit specialty facility in the Northwest for people with autism spectrum disorders. We are proud to be an internationally recognized leader in the field of autism.

**Our mission** is to provide excellent care for individuals with autism and their families by offering evidence-based clinical services, conducting cutting-edge research, and providing specialized training opportunities for parents, service providers, and future professionals.



**Toll-free Information and Resource Line  
1-877-408-UWAC (8922)**

Community members across the state can call a single toll-free number to obtain answers to their questions about autism, nearby resources, clinical services, and research opportunities.

**Diagnostic Assessments**

Our team offers comprehensive, multidisciplinary evaluations conducted by a team of specialists in the fields of psychology, speech-language pathology, education, and developmental-behavioral pediatrics. We aim to address every question and concern families may have about autism spectrum disorders.

**Toddler Screening Clinic**

Autism screening is available for children under 24 months of age. Experienced clinicians provide consultation about behavioral concerns and recommendations regarding in-home strategies and community resources for improving children's social and communicative development. Follow-up consultation is also provided.

**Medical Evaluation**

Medical issues often occur with autism spectrum disorders. Our developmental-behavioral pediatrician evaluates potential medical factors contributing to autism symptomatology and provides information and assistance with challenges related to toileting, eating, self-injurious behaviors, and tics.

**Counseling and Support**

Individual counseling from autism specialists is available for children and adults experiencing issues related to emotion regulation, anxiety, depression and social interactions. We offer coaching and support to improve the quality of life at school, work, and home for individuals with autism as well as their family members.

**Social Skills Intervention**

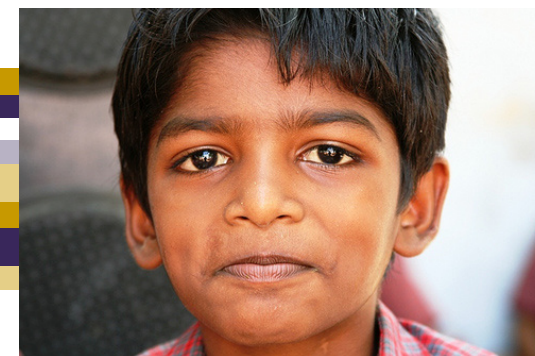
Our activity-based groups provide children with tools and strategies for navigating their social environments. Target goals are individualized and may include initiating and responding to social interactions, having conversations, understanding the feelings of others, developing friendships, and problem-solving challenging interpersonal situations. Our annual summer camp provides opportunities for children to practice social skills within community settings.

**ABA-Based Therapy**

Our autism-specialized consultants provide evidence-based treatment based on the principles of applied behavior analysis. We work together with parents to identify goals, develop activities, and implement tailored treatment to improve the behavior and learning of children from infancy through school age.

**Parent Education: TIES Program**

Parents and family members of newly diagnosed children or adolescents often have many questions about their child and available community services. The TIES (Training, Information, Empowerment, and Support) program offers 16-week group sessions providing training, information, empowerment, and support to families as they begin their journey.



**Speech, Language, and Communication Intervention**

Our speech-language pathologists provide individualized assessment and treatment to help individuals with autism learn more effective ways to interact and communicate with others. A variety of strategies are used to improve basic communication as well as more advanced language capabilities.

**Classroom Consultation**

School issues often arise for students with autism spectrum disorders. Our experienced clinicians collaborate with school staff by providing recommendations, consultation, and coaching to promote your child's success.