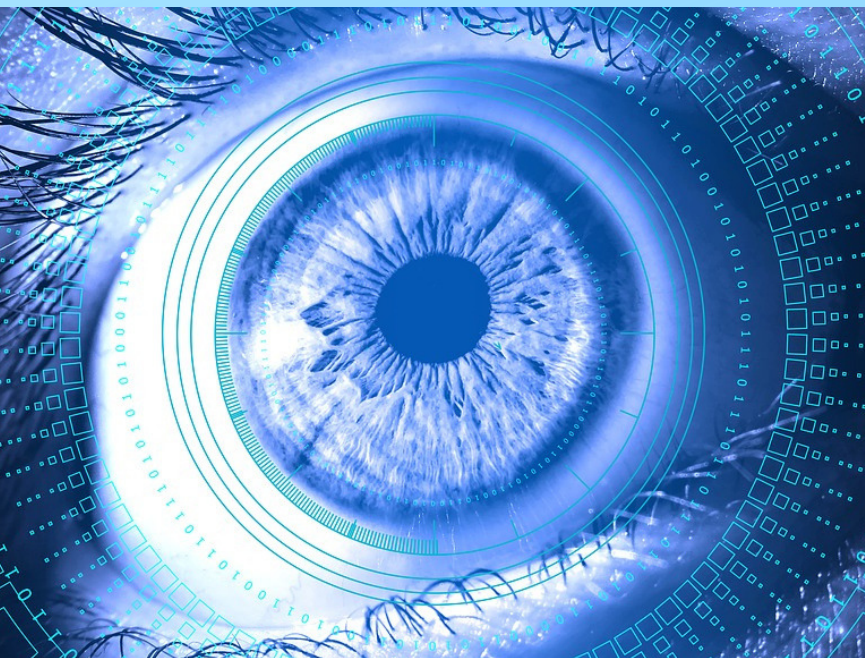


BRI 2019

BIOMEDICAL
RESEARCH
INTEGRITY
PROGRAM

DATA SHARING ACROSS DISCIPLINES: "EVIDENTIAL CULTURES" & CURATION FOR REUSE



**THURSDAY
SEPTEMBER 5, 2019**

12 - 1 PM

LECTURE, FRED HUTCH, WEINTRAUB BLDG
B-SUITES

3:30 - 4 PM

COFFEE & REGISTRATION, UW
HEALTH SCIENCES BLDG, A420
HOGNESS AUDITORIUM

4 - 5 PM

LECTURE, UW
HEALTH SCIENCES BLDG, A420
HOGNESS AUDITORIUM

NIH TOPIC: DATA ACQUISITION, MANAGEMENT, SHARING, & OWNERSHIP

Data management practices are maturing, and data sharing is increasing. At the same time, limited progress has been made on the data infrastructure long envisioned for enabling interdisciplinary research.

OBJECTIVES:

- Examine current advances in data sharing and their practical implications for data reuse across disciplines.
- Consider how researchers and data curation services can work together to increase reuse value and decrease interpretive risk, furthering a data ecosystem that fosters interdisciplinary solutions to complex research problems.

SPEAKER: CAROLE PALMER, PHD

Professor and Associate Dean for Research, University of Washington Information School



UNIVERSITY OF WASHINGTON DEPT OF BIOETHICS & HUMANITIES

Bioethics & Humanities: depts.washington.edu/uwbri (206) 221-6548 uwbri@uw.edu
Disability Services: hr.uw.edu/dso (206) 543-6452 dso@uw.edu