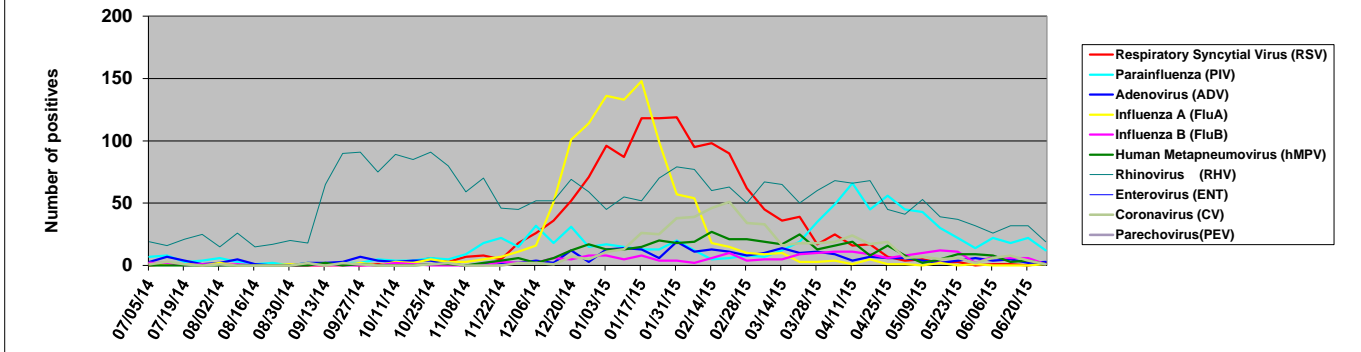


2014 - 2015 Respiratory & Enteric Viruses Seattle, Washington



Week ending	Viruses Detected (by all methods)										Denominators (number of tests performed)				Influenza A subtypes		
	Respiratory Syncytial Virus (RSV)	Parainfluenza (PIV)	Adenovirus (ADV)	Influenza A (FluA)	Influenza B (FluB)	Human Metapneumovirus (hMPV)	Rhinovirus (RHV)	Coronavirus (CV)	Enterovirus (ENT)	Parechovirus (PEV)	Antigen Detection (UW Virology)	Qual PCR Panel (SCH lab)*	Semi-Quant PCR Panel (UW Molecular Virology)	Rapid Flu A/B/RSV PCR (UW)	2009 Pandemic AH1N1	Seasonal AH1N1	AH3N2
05-Jul-14	0	7	3	2	2	0	19	1	0	0	30	55	42	7	0	0	0
12-Jul-14	1	8	7	1	2	0	16	3	2	1	23	55	33	3	0	0	1
19-Jul-14	1	3	4	1	0	0	21	1	0	0	16	53	30	6	0	0	0
26-Jul-14	0	4	1	0	1	0	25	0	2	3	18	52	48	5	0	0	0
02-Aug-14	1	6	2	2	0	0	15	1	0	1	23	46	31	10	0	0	1
09-Aug-14	0	3	5	0	1	0	26	0	1	0	21	57	38	2	0	0	0
16-Aug-14	1	1	1	0	0	0	15	0	0	1	29	51	35	2	0	0	0
23-Aug-14	0	2	0	0	0	0	17	0	1	0	16	53	34	0	0	0	0
30-Aug-14	0	0	0	1	0	0	20	0	2	0	14	55	39	0	0	0	1
06-Sep-14	0	2	2	0	0	0	18	2	0	1	22	48	35	5	0	0	0
13-Sep-14	0	0	2	0	0	2	65	0	1	0	17	94	39	7	0	0	0
20-Sep-14	1	2	3	0	0	0	90	2	1	0	23	128	53	7	0	0	0
27-Sep-14	0	2	7	2	0	1	91	1	2	0	26	135	58	15	0	0	1
04-Oct-14	1	5	4	0	0	0	75	0	1	0	28	109	58	23	0	0	0
11-Oct-14	0	4	3	3	2	0	89	0	0	1	21	116	67	35	0	0	1
18-Oct-14	3	4	4	2	1	0	85	0	2	0	27	116	77	36	0	0	1
25-Oct-14	6	6	4	5	0	1	91	1	1	0	34	134	58	25	0	0	3
01-Nov-14	3	5	1	3	0	1	80	2	3	0	24	149	57	21	0	0	1
08-Nov-14	7	9	0	3	0	0	59	0	0	1	21	122	52	20	0	0	2
15-Nov-14	8	18	1	5	0	0	70	0	1	0	27	141	59	40	0	0	5
22-Nov-14	5	22	2	7	3	4	46	0	0	0	26	129	53	29	0	0	4
29-Nov-14	18	15	2	11	2	6	45	2	0	0	22	143	31	23	1	0	10
06-Dec-14	26	32	4	16	2	2	52	2	0	0	35	171	59	50	0	0	15
13-Dec-14	36	18	2	51	6	6	52	1	1	0	27	200	47	70	0	0	45
20-Dec-14	52	31	12	101	5	12	69	7	1	0	24	281	47	103	0	0	90
27-Dec-14	71	15	3	114	8	17	59	5	0	0	30	288	40	116	0	0	94
03-Jan-15	96	17	13	136	8	13	45	11	1	0	39	277	63	196	0	0	109
10-Jan-15	87	15	14	133	5	13	55	13	0	0	36	276	82	208	0	0	103
17-Jan-15	118	13	13	148	8	15	52	26	0	0	38	321	101	235	0	0	121
24-Jan-15	118	13	6	99	4	20	70	25	0	0	31	335	95	173	0	0	84
31-Jan-15	119	20	19	57	4	18	79	38	1	0	32	354	99	103	0	0	50
07-Feb-15	95	12	11	54	2	19	77	39	0	0	32	335	75	110	0	0	45
14-Feb-15	98	5	13	18	6	27	60	46	0	0	25	258	61	102	0	0	13
21-Feb-15	90	6	11	15	10	21	63	51	1	0	28	274	65	86	1	0	10
28-Feb-15	62	8	8	10	4	21	50	34	0	0	21	226	73	81	0	0	9
07-Mar-15	45	7	10	9	5	19	67	33	1	0	19	226	75	55	1	0	8
14-Mar-15	36	12	14	10	5	17	65	16	1	0	28	200	67	65	1	0	8
21-Mar-15	39	19	10	3	9	25	50	18	0	0	24	208	68	36	0	0	3
28-Mar-15	17	35	11	3	10	13	60	18	0	0	24	188	79	42	1	0	1
04-Apr-15	25	49	9	4	11	16	68	19	0	0	16	191	92	41	0	0	4
11-Apr-15	16	66	4	1	11	19	66	24	1	0	22	169	179	28	0	0	1
18-Apr-15	17	45	7	5	9	8	68	17	4	0	23	139	156	31	0	0	4
25-Apr-15	7	56	6	1	6	16	45	19	1	0	15	117	140	12	0	0	1
02-May-15	4	45	6	1	8	8	41	6	2	0	25	112	104	15	1	0	0
09-May-15	5	43	4	0	10	2	53	7	2	0	23	119	76	14	0	0	0
16-May-15	2	30	2	0	12	5	39	5	0	0	105	80	15	0	0	1	
23-May-15	3	22	4	0	11	9	37	6	0	0	18	138	75	15	0	0	0
30-May-15	0	14	6	1	2	9	32	2	1	0	9	120	62	14	0	0	0
06-Jun-15	1	22	4	0	7	8	26	6	1	0	19	95	74	12	0	0	0
13-Jun-15	1	18	5	0	6	3	32	8	2	0	14	93	54	10	0	0	0
20-Jun-15	0	22	2	0	6	4	32	4	0	0	17	68	59	5	0	0	0
27-Jun-15	2	12	3	1	1	1	19	1	1	0	20	61	46	8	0	0	1

These data are posted weekly and tabulated as accurately as possible for educational and informational purposes.

Last Updated: 7/1/2015

By Anne Cent

Email: acent@uw.edu

* Qual PCR does not differentiate between RHV and ENT; tallied as RHV

