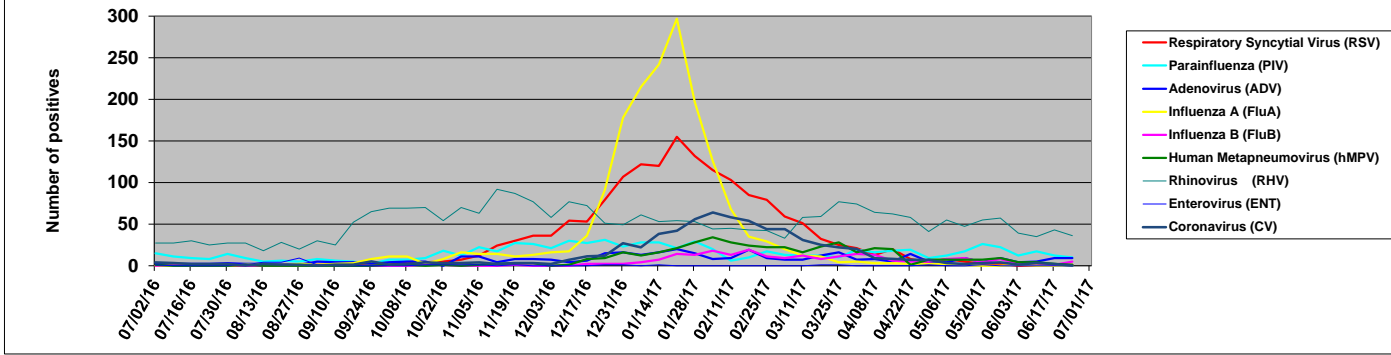


## 2016 - 2017 Respiratory & Enteric Viruses Seattle, Washington



Week ending	Viruses Detected (by all methods)										Denominators (number of tests performed)				Influenza A subtypes		
	Respiratory Syncytial Virus (RSV)	Parainfluenza (PIV)	Adenovirus (ADV)	Influenza A (FluA)	Influenza B (FluB)	Human Metapneumovirus (hMPV)	Rhinovirus (RHV)	Coronavirus (CV)	Enterovirus (ENT)	Antigen Detection (UW Virology)	Qual PCR Panel (SCH lab)*	Semi-Quant PCR Panel (UW Molecular Virology)	Rapid Flu A/B/RSV PCR (UW)	2009 Pandemic AH1N1	AH3N2	not done or unknown	
02-Jul-16	0	15	3	0	0	1	27	4	1	14	55	51	8	0	0	0	
09-Jul-16	1	11	2	0	1	0	27	3	0	16	71	51	4	0	0	0	
16-Jul-16	0	9	2	0	0	0	30	2	0	19	66	44	9	0	0	0	
23-Jul-16	1	8	2	0	0	0	25	2	0	16	72	52	2	0	0	0	
30-Jul-16	0	14	3	0	1	0	27	2	0	20	55	52	8	0	0	0	
06-Aug-16	0	9	2	1	0	1	27	0	1	11	60	42	2	0	0	1	
13-Aug-16	0	5	2	2	0	0	18	2	4	17	59	38	7	0	1	1	
20-Aug-16	1	6	1	0	0	0	28	1	4	22	60	43	4	0	0	0	
27-Aug-16	1	5	1	2	0	0	20	1	9	17	62	42	2	0	1	1	
03-Sep-16	1	8	5	1	0	0	30	0	1	17	70	38	4	0	1	0	
10-Sep-16	1	6	4	2	0	0	25	1	0	18	62	39	9	0	1	1	
17-Sep-16	3	5	4	3	0	0	52	1	0	25	95	55	23	0	1	2	
24-Sep-16	0	2	2	8	0	0	65	5	0	22	109	62	37	0	5	3	
01-Oct-16	1	7	4	11	0	1	69	1	0	23	109	71	66	0	3	8	
08-Oct-16	5	7	5	11	0	1	69	2	0	15	146	56	86	1	6	4	
15-Oct-16	4	9	5	2	1	0	70	4	1	25	115	87	63	0	1	1	
22-Oct-16	5	18	0	8	1	1	54	3	1	10	136	49	64	0	8	0	
29-Oct-16	7	12	11	16	0	0	70	3	1	17	151	63	64	0	13	4	
05-Nov-16	12	22	11	14	0	1	63	4	1	22	170	75	70	0	10	4	
12-Nov-16	24	17	4	14	0	2	92	2	0	25	209	65	90	0	7	7	
19-Nov-16	30	27	8	11	1	3	77	3	0	22	192	82	111	0	5	6	
26-Nov-16	36	26	8	13	0	3	87	3	0	19	228	49	99	0	7	6	
03-Dec-16	36	21	7	16	0	0	58	2	0	14	178	53	119	0	8	8	
10-Dec-16	54	30	4	17	0	1	77	7	0	17	222	67	122	0	11	7	
17-Dec-16	53	27	6	36	2	8	72	11	0	16	224	72	132	1	17	18	
24-Dec-16	79	31	15	91	2	9	51	12	1	29	233	80	182	1	39	51	
31-Dec-16	107	23	16	178	2	16	49	27	1	24	321	68	325	2	75	101	
07-Jan-17	122	28	13	215	4	12	61	22	0	10	362	98	499	1	74	140	
14-Jan-17	120	28	16	242	7	16	53	38	1	26	365	101	569	1	96	145	
21-Jan-17	155	21	20	297	14	21	54	42	0	21	431	72	590	3	119	175	
28-Jan-17	132	29	15	197	13	28	53	56	0	27	389	134	482	8	71	118	
04-Feb-17	115	20	8	126	18	34	44	64	0	19	359	117	404	6	51	69	
11-Feb-17	103	6	9	68	13	28	45	58	0	22	308	105	277	3	24	41	
18-Feb-17	85	10	19	35	19	24	43	54	0	17	256	74	265	0	10	25	
25-Feb-17	79	17	9	29	11	22	42	44	0	25	235	77	191	4	10	15	
04-Mar-17	59	13	7	20	9	22	33	44	0	18	206	74	184	3	4	13	
11-Mar-17	51	12	7	12	12	16	58	31	0	14	203	77	151	0	7	5	
18-Mar-17	32	12	12	11	8	23	59	25	1	16	218	73	115	1	4	6	
25-Mar-17	25	10	16	4	11	28	77	22	1	25	209	69	120	0	0	4	
01-Apr-17	21	19	7	5	14	16	74	20	0	13	185	76	118	0	0	5	
08-Apr-17	13	16	8	3	13	21	64	9	0	24	179	73	101	0	2	1	
15-Apr-17	20	18	5	3	6	20	62	8	0	21	167	65	80	0	1	2	
22-Apr-17	8	19	14	2	5	1	58	7	0	20	121	65	74	1	0	1	
29-Apr-17	4	9	5	2	5	7	41	7	1	18	100	76	62	0	1	1	
06-May-17	8	12	4	2	8	7	55	3	0	14	100	62	48	0	0	2	
13-May-17	5	17	9	1	9	7	47	2	0	9	111	49	56	0	0	1	
20-May-17	2	26	4	0	4	7	55	3	1	18	106	64	59	0	0	0	
27-May-17	2	22	9	0	8	9	57	4	0	25	136	79	45	0	0	0	
03-Jun-17	0	12	4	1	2	4	39	1	0	11	91	56	49	0	0	1	
10-Jun-17	0	17	5	0	3	4	35	3	0	20	81	61	46	0	0	0	
17-Jun-17	1	12	9	0	1	2	43	2	0	18	87	70	26	0	0	0	
24-Jun-17	1	10	9	1	5	1	36	0	0	13	83	52	24	1	0	0	
01-Jul-17	0	6	4	5	3	3	50	0	0	18	78	70	24	1	0	4	

These data are posted weekly and tabulated as accurately as possible for educational and informational purposes. Tallies are data from UW, HMC, SCCA, and SCH laboratory testing  
 Last Updated: 7/3/2017  
[acent@uw.edu](mailto:acent@uw.edu)

\* Qual PCR does not differentiate between RHV and ENT; tallied as RHV