

perspectives on African American health inequities



Ben
Danielson
9/18/14

AFRICAN AMERICAN HEALTH DISPARITIES: ADULTS



asthma

x2.1
as likely to die
from asthma²

depression

20%
less likely to receive
treatment for depression¹

stroke

40%
more likely to die
from stroke²

**breast
cancer**

40%
more likely to die
from breast cancer²

**heart
disease**

30%
more likely to die
of heart disease²

**cervical
cancer**

x2
as likely to die from
cervical cancer²

obesity

40%
more likely to
be obese³

**prostate
cancer**

x2
as likely to die from
prostate cancer²

**maternal
mortality**

x2.5
as likely to die
during pregnancy⁴

HIV

x9
as likely to be
diagnosed with HIV⁶

x8

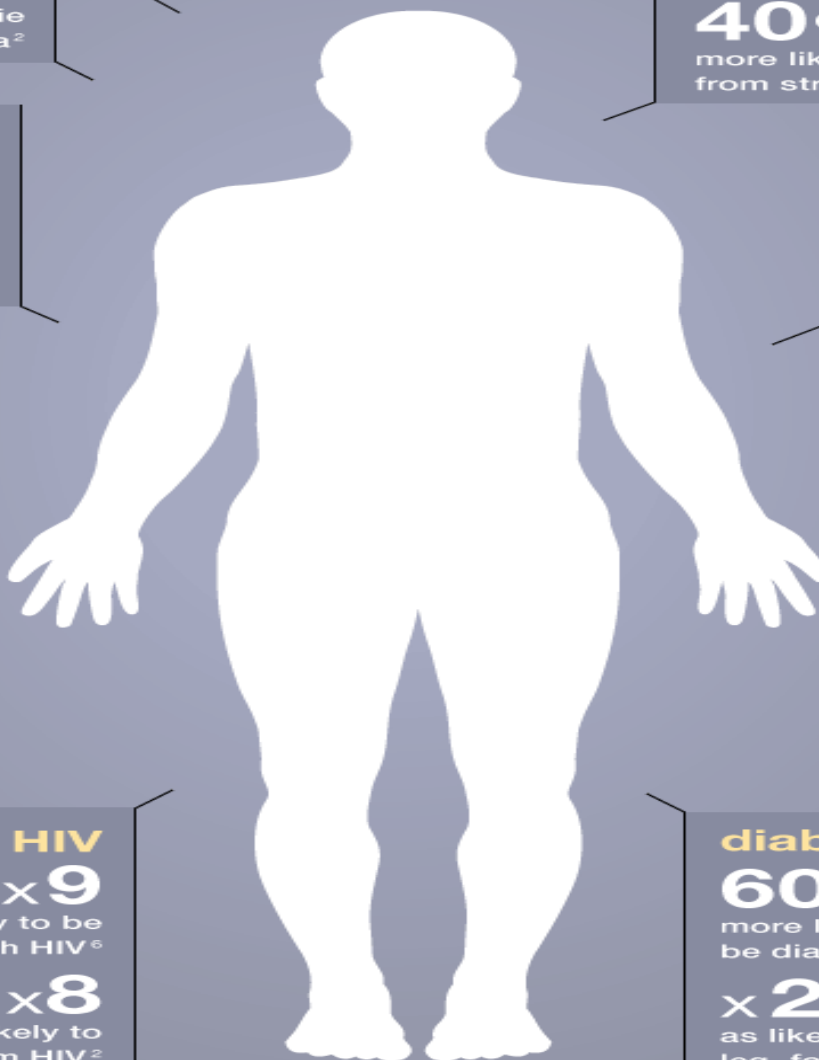
as likely to
die from HIV²

diabetes

60%
more likely to
be diabetic³

x2

as likely to undergo
leg, foot, or toe
amputation⁵



AFRICAN AMERICAN HEALTH DISPARITIES: CHILDREN

Compared to non-Hispanic white children, African American children are more likely to suffer from the following:

infant mortality

x2

as likely to
die as an
infant¹

SIDS

x2

as likely to
die of
SIDS²

asthma

x2

as likely to
have asthma³

x3

as likely to
die from asthma⁴

obesity

73%

more likely to
be obese⁵

depression

30%

more likely to
attempt suicide
as a high-schooler¹⁰

**How do we reduce racial and ethnic health disparities?
We must work together to improve our health care
system to make it high-quality, comprehensive,
affordable, and accessible for everyone.**

April 2014

FamiliesUSA.org

FAMILIESUSA 

¹ Agency for Healthcare Research and Quality, 2012 *National Healthcare Quality and Disparities Reports*

² CDC, *Deaths: Final Data for 2010*

³ CDC, *Summary Health Statistics for U.S. Adults: National Health Interview Survey 2011*

⁴ CDC, *Deaths: Final Data for 2007*

⁵ CDC, *Age-Adjusted Hospital Discharge Rates for Nontraumatic Lower Extremity Amputations per 1,000 Diabetic Population, by Race, United States, 1988-2009*

⁶ CDC: National Center for HIV/AIDS, Viral Hepatitis, STD, and TB Prevention, *Diagnoses of HIV Infection in the United States and Dependent Areas, 2011*

⁷ CDC, *Infant Mortality Statistics from the 2009 Period Linked Birth/Infant Death Data Set*

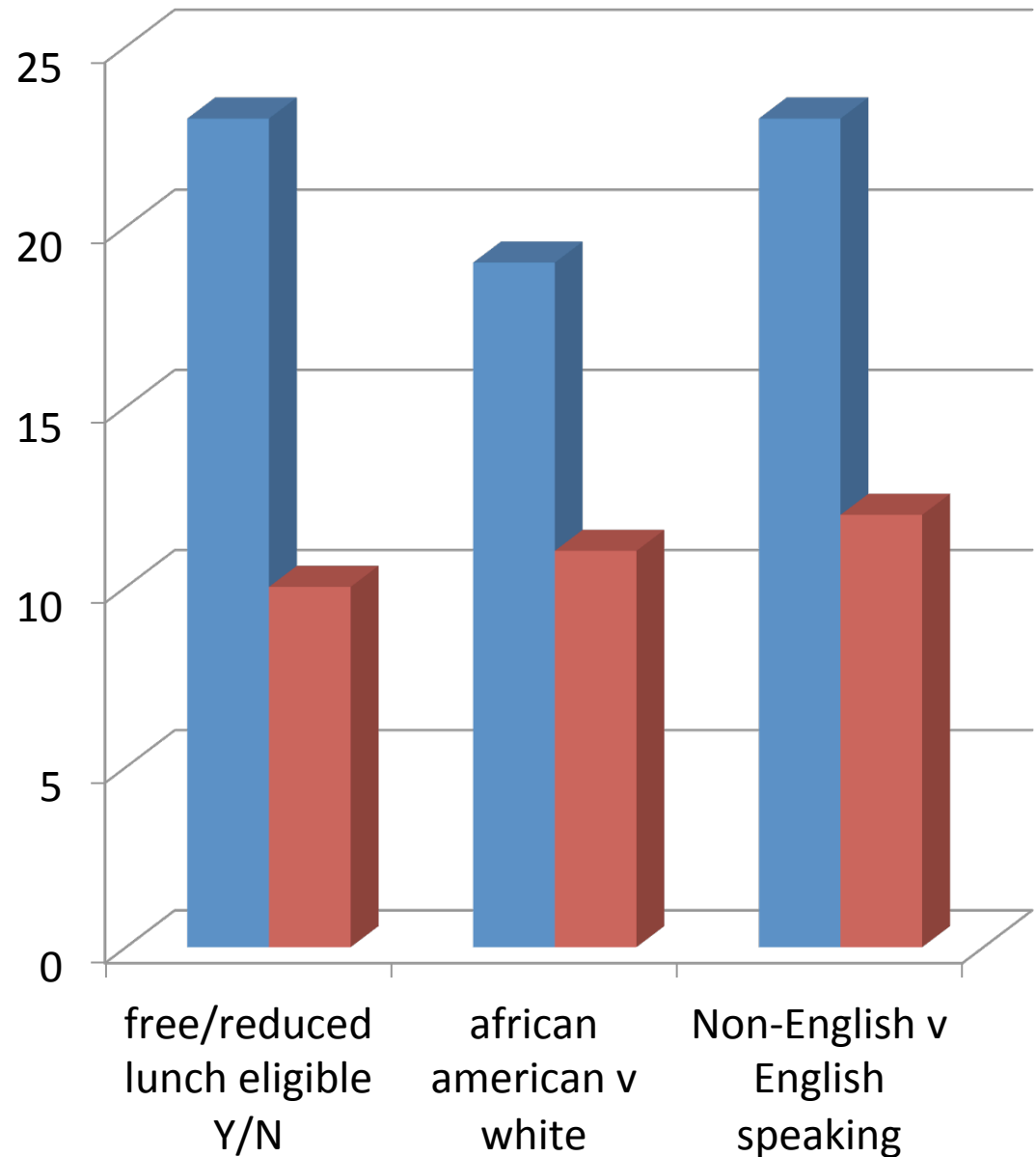
⁸ CDC, *National Surveillance of Asthma: United States, 2001-2010*

⁹ Federal Interagency Forum on Child and Family Statistics, *America's Children: Key National Indicators of Well-Being, 2013*

¹⁰ CDC, *Youth Risk Behavior Surveillance – United States, 2011*

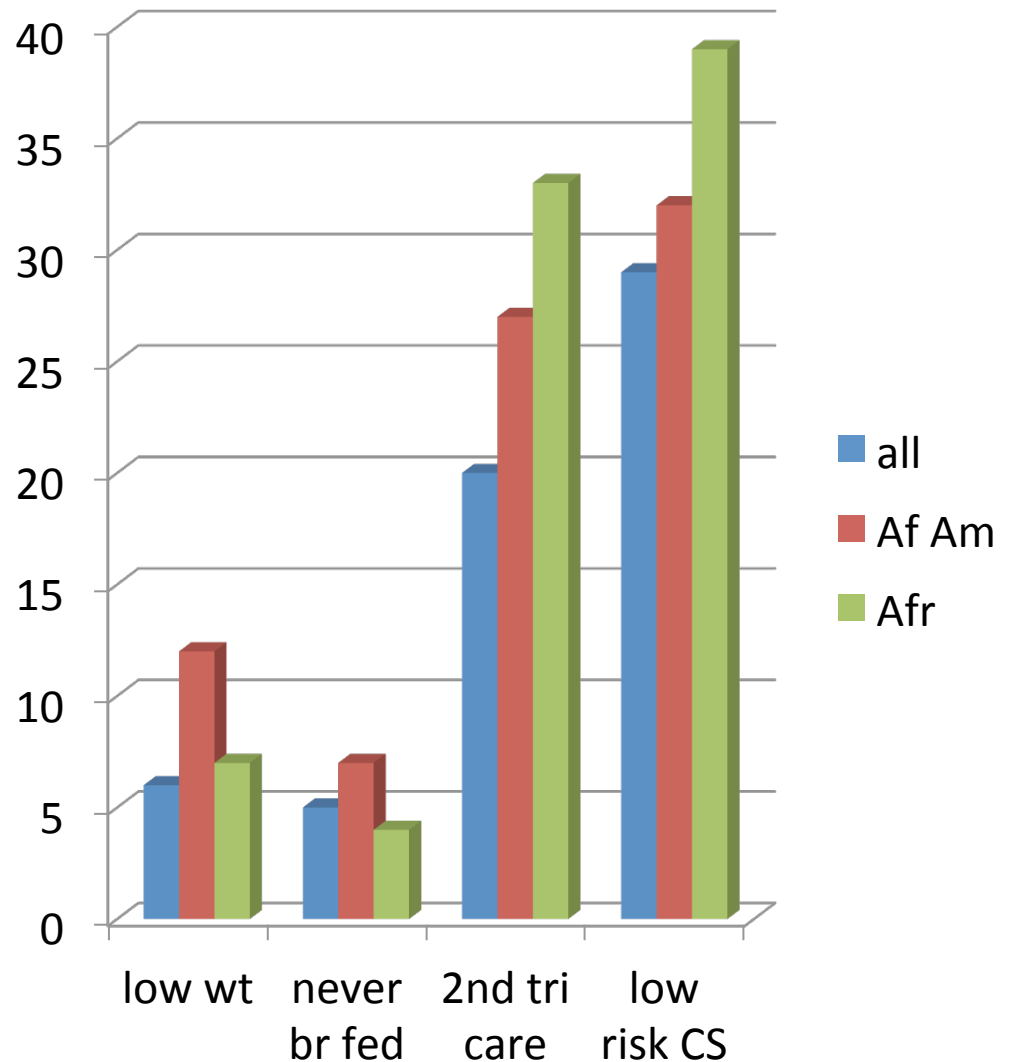
2010 Smile Survey

- 4000 children in kindergarten and 3rd grade
- Data for King County
- % untreated Caries

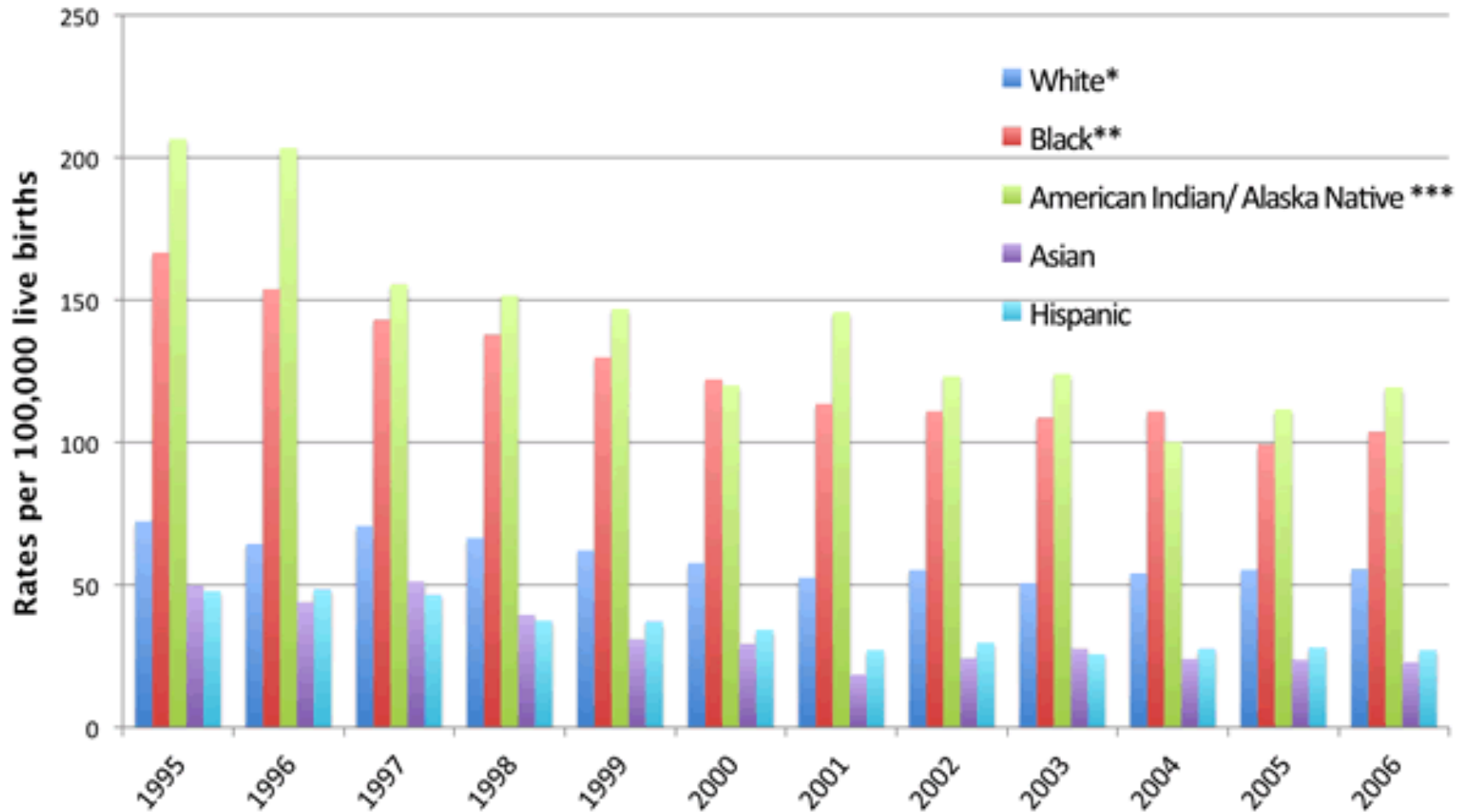


Birth Outcomes King County 2008-2012

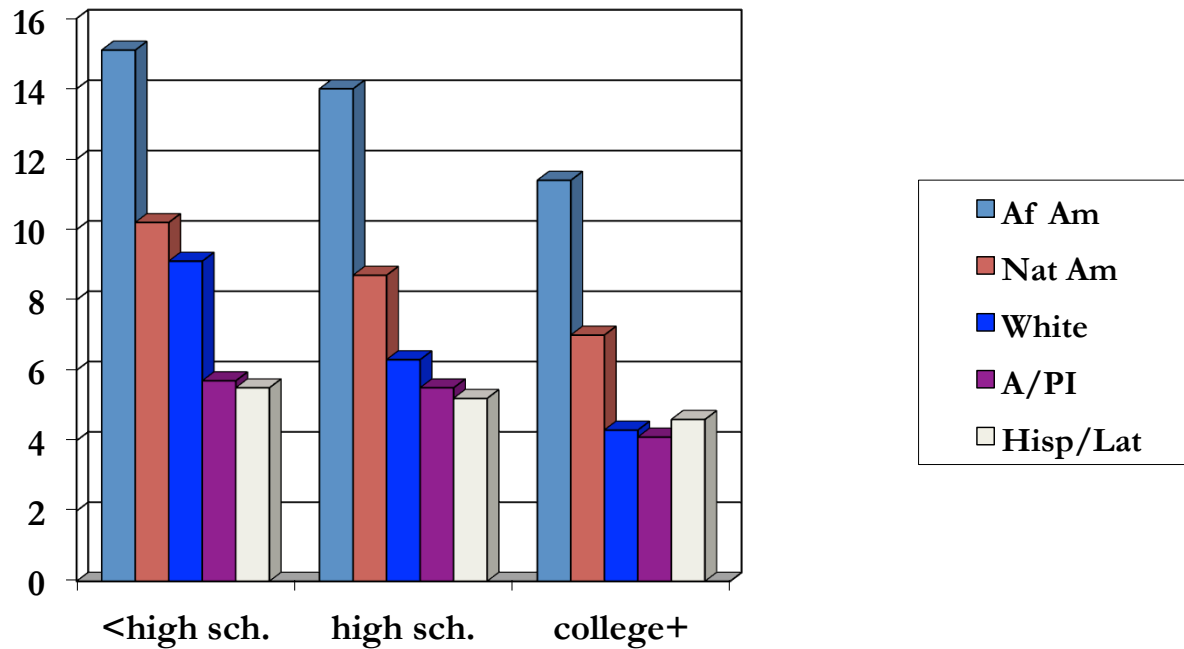
- African Americans are more likely to have a low birth wt baby
- African Americans are more likely to never initiate breast feeding
- African immigrants are more likely to start prenatal care after the first trimester
- African immigrants are more likely to have a C-section despite having a low risk pregnancy



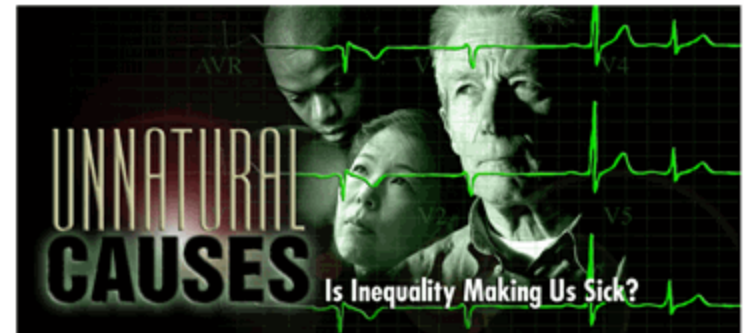
SIDS rates by race/ethnicity



Infant mortality, race and socioeconomic

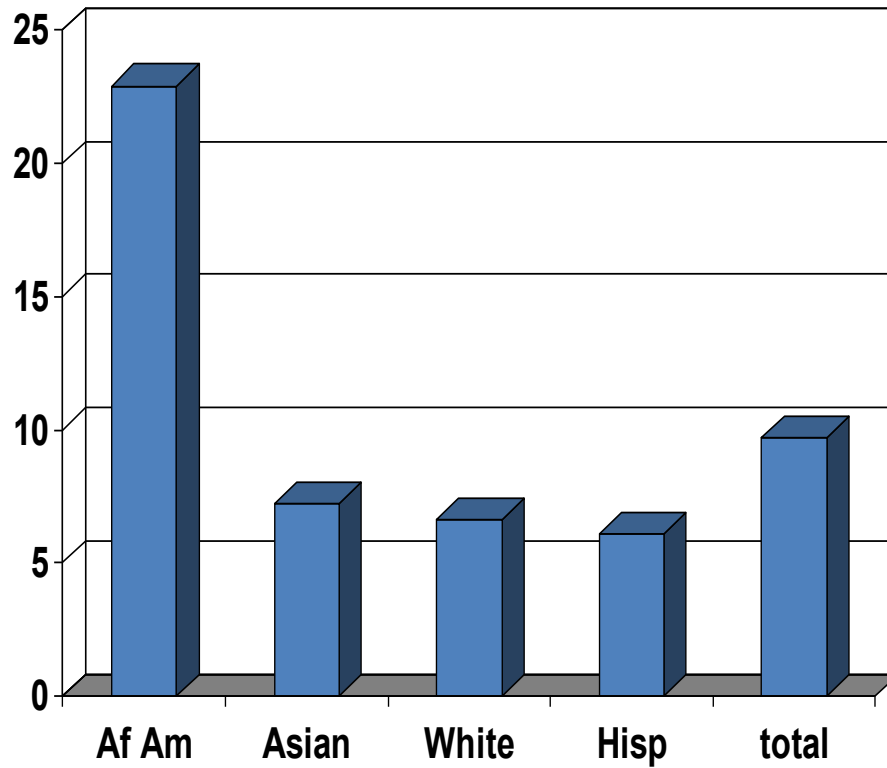


- National Center for Health Statistics, National linked birth/infant death data, 2002

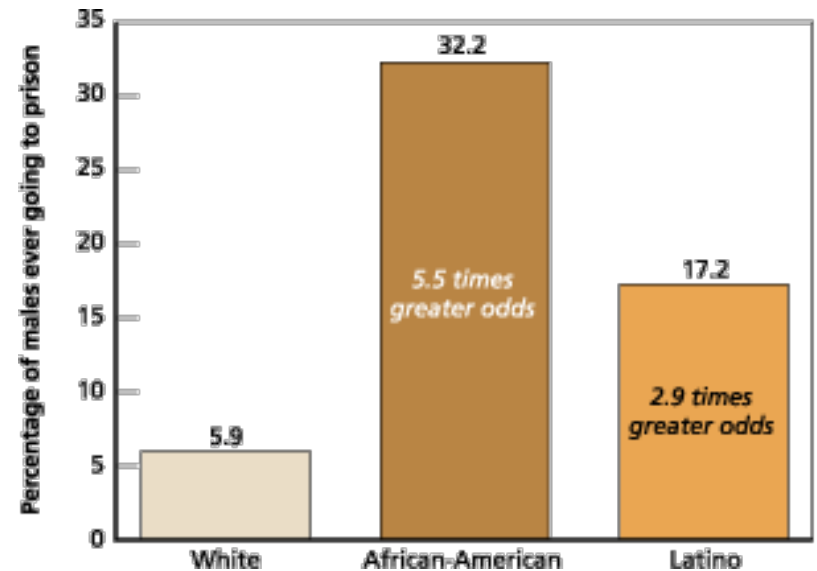




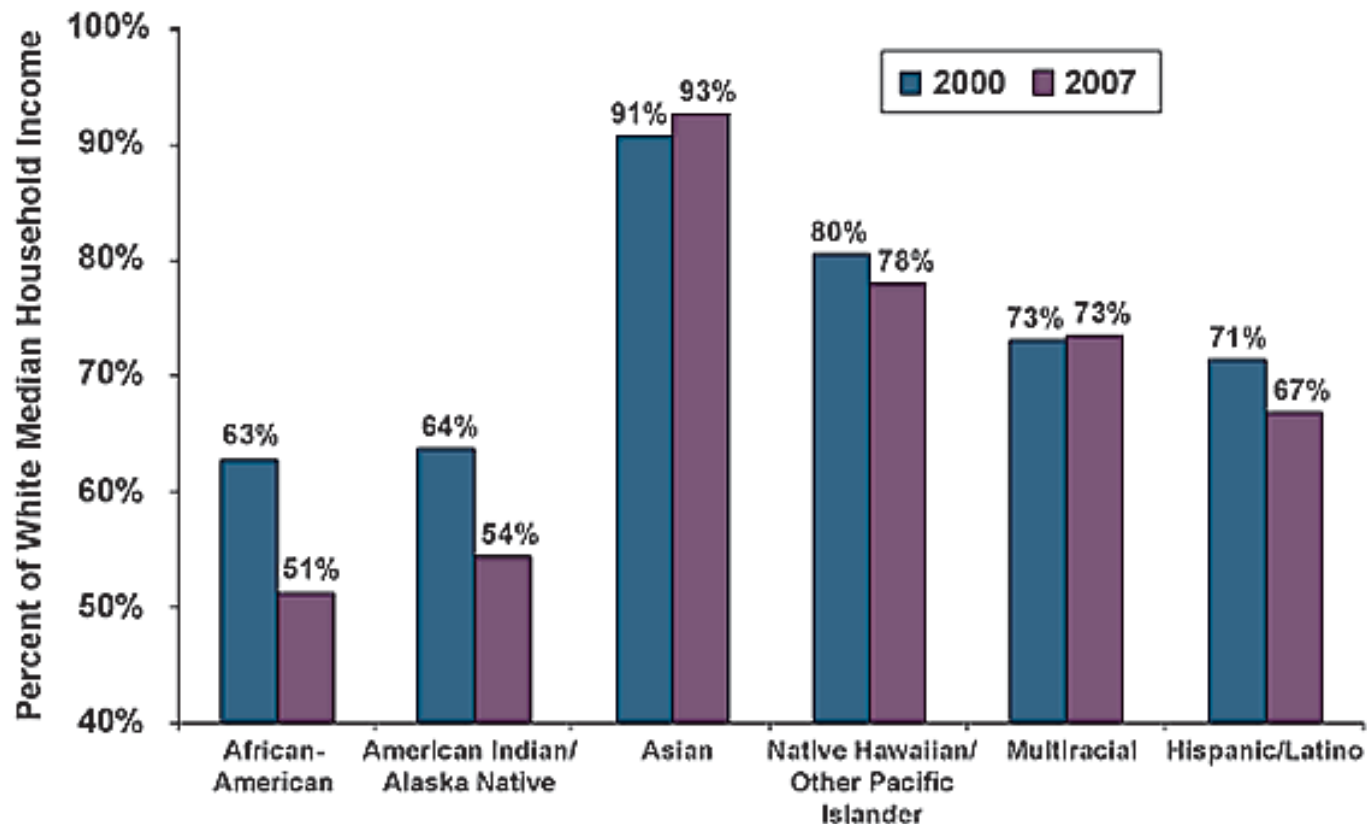
'The Consequences of Dropping Out of High School', Andrew Sum et al



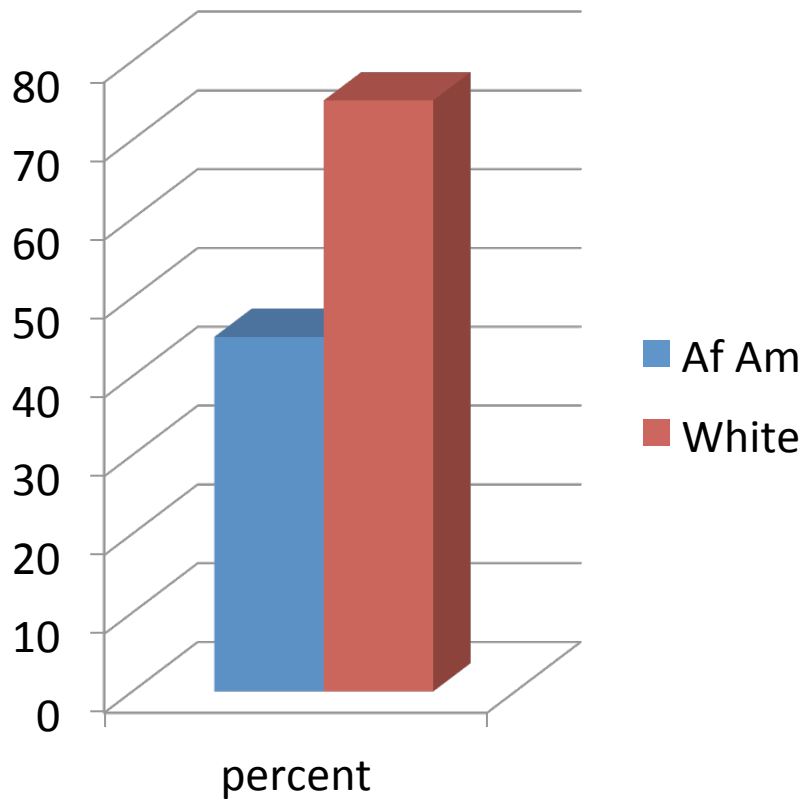
■ jail/juvenile



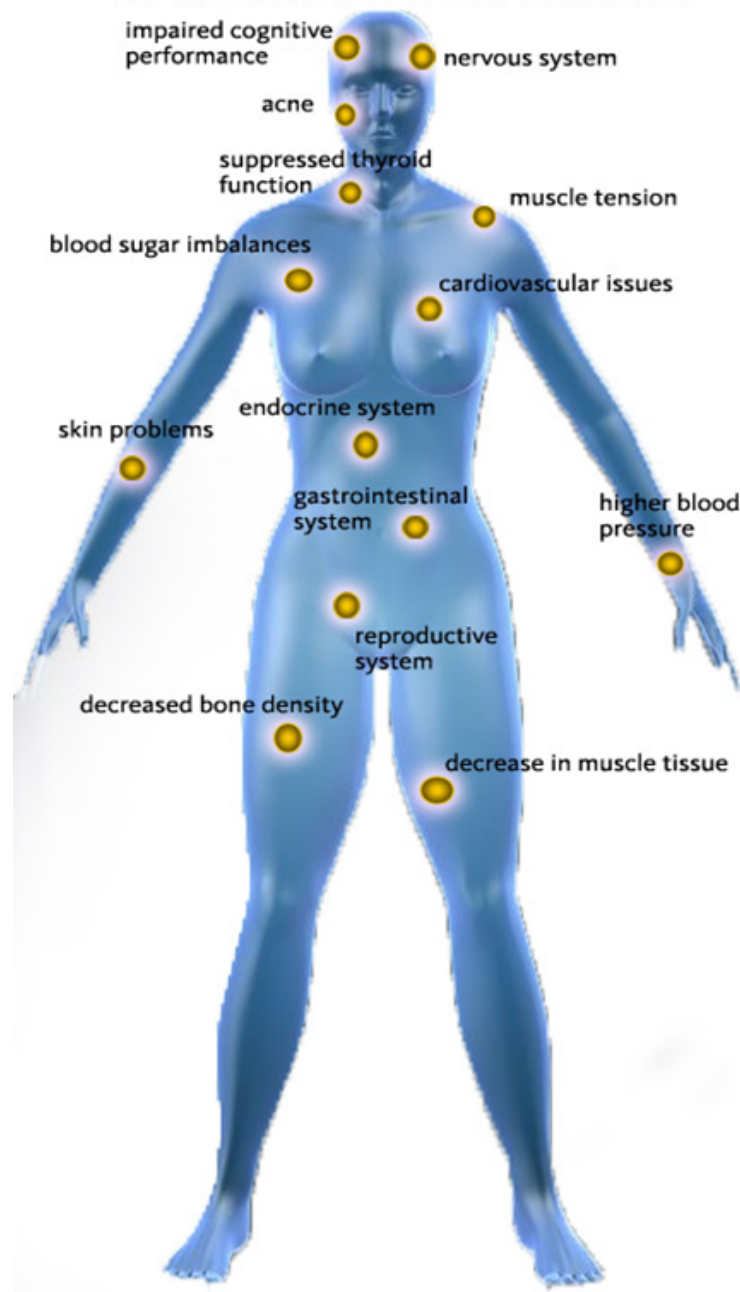
Median Income by Race/Ethnicity,
as a Percent of White Median Household Income
King County, 2000 & 2007



Home ownership rates in WA 2010



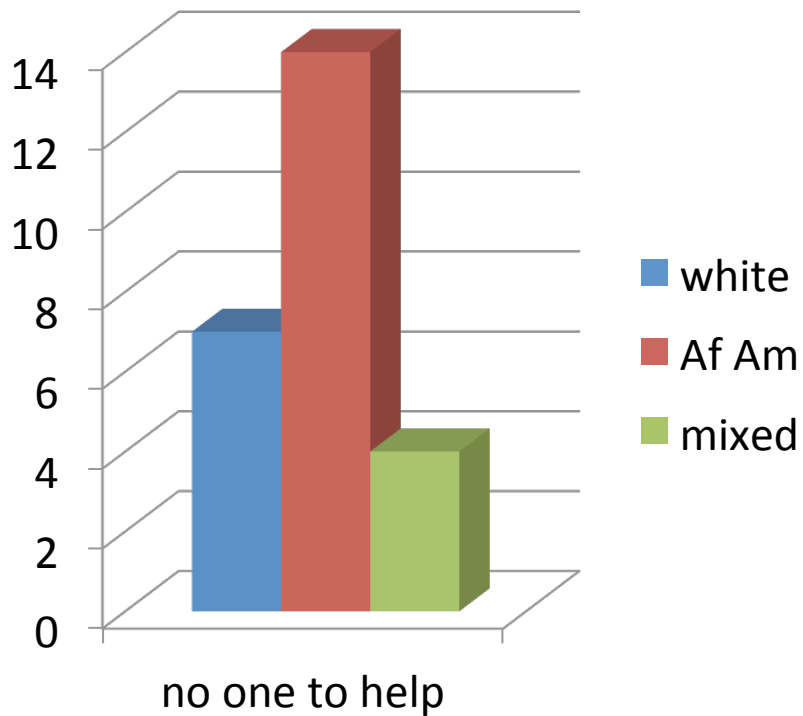
THE EFFECTS OF STRESS



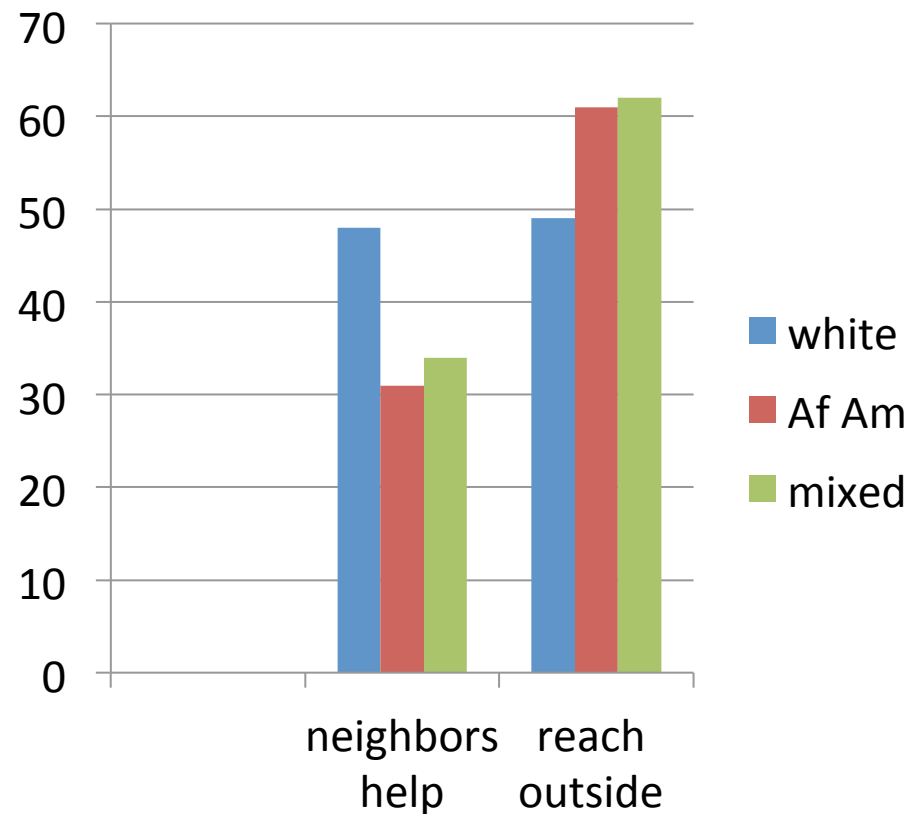
Measures of Resilience

King County 2012-2013

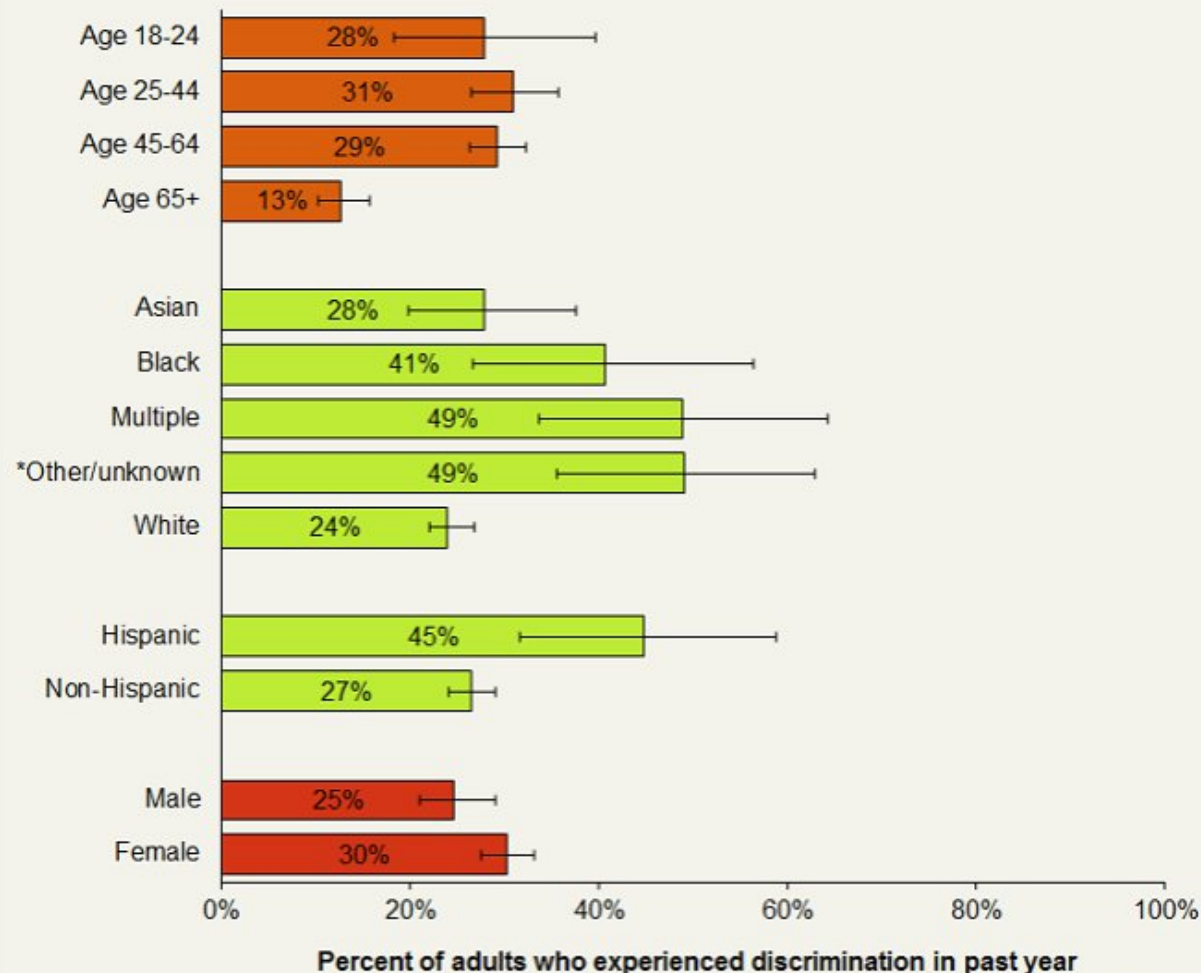
Personal connectedness



Community connections



Discrimination by age, race, ethnicity, gender, King County (2011)



—: Confidence interval shows range that includes true value 95% of the time.
 Other/Unknown: American Indian/Alaska Natives, Pacific Islanders, and those without race data were combined because the number of respondents in each group was too small to generate stable rates.
 See Notes & Sources for additional details.

Is Everyone a Little Bit Racist?

AUG. 27, 2014

[‘Scholars have found](#) that blacks and Hispanics treated by doctors for a broken leg received pain medication significantly less often than white patients with the same injury. [School administrators suspend](#) black students at more than three times the rate of white students. Police arrest blacks at 3.7 times the rate of whites [for marijuana possession](#), even though surveys find that both use marijuana at roughly similar rates.’

‘Two scholars sent out nearly 5,000 résumés in response to help-wanted ads, randomly alternating between stereotypically white-sounding names and black-sounding names. They found that it took 50 percent more mailings to get a callback for a black name.’

‘...the challenge is not a small number of twisted white supremacists but something infinitely more subtle and complex: People who believe in equality but who act in ways that perpetuate bias and inequality.’

an estimated

3.8
MILLION

African Americans that would otherwise be uninsured will gain coverage to health care by 2016 because of the Affordable Care Act.

OBAMACARE
works

obamacareworks.org

 **Planned
Parenthood**
Care. No matter what.

an estimated

509,000

African-American young people between the ages of 19 and 25 have health insurance because of the Affordable Care Act.

OBAMACARE
works

obamacareworks.org

 **Planned
Parenthood**
Care. No matter what.