



A New System for Evaluating Youth Outcomes and Wraparound Quality Using Measures of the Wraparound Fidelity Assessment System

Wraparound Evaluation and Research Team

University of Washington, Seattle, WA

What is WrapStat?

WrapStat is a web-based data collection, management, and feedback system designed to evaluate the fidelity of Wraparound services based on the Wraparound Fidelity Assessment System (WFAS) measures. WrapStat utilizes recent technological advancements to aid in rigorous fidelity and outcomes evaluations. It includes many features all in one place, including: an overview of the program, a full youth roster, data-tracking and management, reporting functions, and training resources. This new system will include information on your entire program, and not just the youth currently being served. Therefore, this system also enables monitoring overall program outcomes, demographics, and general evaluation.

How Does WrapStat Work?

Upon logging into WrapStat, users will see all the tabs that their permissions allow. These tabs include: Dashboard, Youth Roster, Evaluation Cycles, Data Management, Reports, Manage, and Resources. Between all of these tabs, users have the capability to: add any and all youth served by program (both in the past and current), create plans and samples for data collection based on one of the three WFAS measures (WFI-EZ, TOM 2.0, & DART), manage and report data, add users and Care Coordinators, and access any useful resources, including trainings, paper forms, and links to useful websites. The overarching goal of WrapStat is to be a one-stop shop for data collection efforts related to Wraparound fidelity as well as serve as repository for your program's youth in Wraparound.

3-C Institute

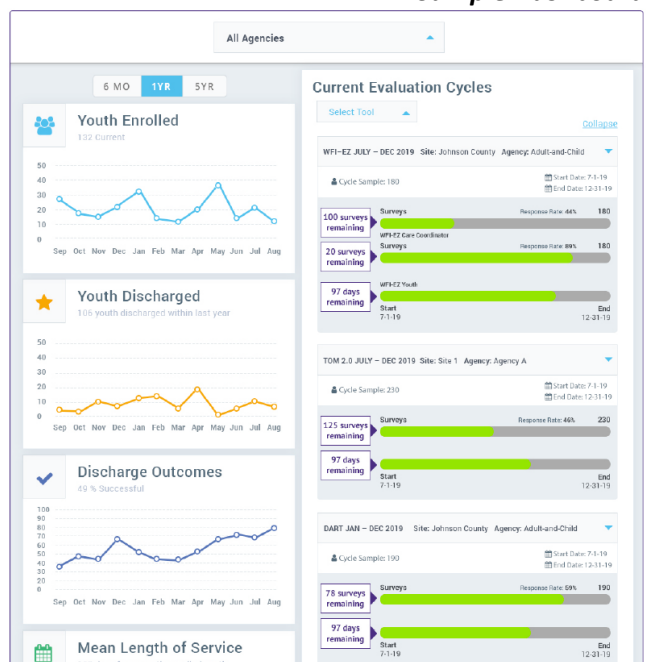
Durham, NC

Why should we use WrapStat?

Research on Wraparound continues to show positive outcomes. However, outcomes are more positive when the team process, clinical decision-making, supervision, and organizational and system decisions are informed by relevant data. Collecting and using data promotes greater fidelity to key Wraparound principles such as collaboration, high-quality teamwork, and being outcomes-based, which in turn promotes positive outcomes for youth and families. WrapStat enables organization and tracking of data regarding all these crucial topics.

WrapStat also meets all Health Insurance Portability and Accountability Act (HIPAA) and Family Educational Rights and Privacy Act (FERPA) requirements.

Dashboard



Sample Dashboard

Who is data collected from?

All youth, active and discharged, are displayed on the Youth Roster tab. This roster enables tracking critical outcomes over time, including length of enrollment, level of needs met, and overall success of discharged youth/families. Other variables in the Youth Roster include (but are not limited to): basic demographics, enrollment/ discharge status, and behavioral history. To start collecting data, you will go to the Evaluation Cycle tab, where the system creates a random sample based on parameters you set (i.e. time frame, WFAS tool, length of enrollment, and stratifications). Cycles are intended to help you maintain high-quality data collection and sampling methods.

How is data collected?

Data is collected in person, or electronically depending on which WFAs tool is used. In the Data Management tab, data is entered, edited, and tracked. There is also a sophisticated messaging feature, where you can set up survey invitations and reminders to be sent to participants who have not completed the tool.

How is data analyzed/used?

Data can be analyzed through the Reports tab. This section aids in data visualization and analysis with clean tables and graphs. These are meant to be easily interpretable and will include topics such as fidelity, demographics, item-level means, and relative strengths and areas for improvement. The goal of this section is to help you interpret your data and put it to use.

How Can We Learn More?

Development and pilot testing of WrapStat is now underway. Updates on its availability can be found at WERT's website: depts.washington.edu/wrapeval. To inquire about being a pilot test site, please contact WERT at wrapeval@uw.edu.

Sample Evaluation Cycles

Evaluation Cycles

Create and manage evaluation cycles.

WFI-EZ TOM 2.0 DART

+ Create Evaluation Cycle Show closed cycles

WFI-EZ Care Coordinator

Showing 35 of 35

Actions	Name	Site	Agency	Organization	Collaborator	Sample Size	Start Date	End Date	Cycle Type	Status
	WFI-EZ Care Coordinator DEC 2019-JUN 2021	Kingdom of Floren				0	2019-12-26	2021-06-18	Fixed	Open
	WFI-EZ Care Coordinator DEC 2019-MAR 2020	Gryffindor	Hogwarts	Organization 1	Collaborator 1	0	2019-12-19	2020-03-31	Fixed	Open
	WFI-EZ Care Coordinator DEC 2019-MAR 2020	Hufflepuff	Hogwarts	Organization 1	Collaborator 1	0	2019-12-19	2020-03-31	Fixed	Open
	WFI-EZ Care Coordinator DEC 2019-MAR 2020	Ravenclaw	Hogwarts	Organization 1	Collaborator 1	0	2019-12-19	2020-03-31	Fixed	Open
	WFI-EZ Care Coordinator DEC 2019-MAR 2020	Slytherin	Hogwarts	Organization 1	Collaborator 1	0	2019-12-19	2020-03-31	Fixed	Open

Sample Data Management

Johnson County Indiana DHHA / A046-and-CH16 / Johnson County Change Site

WFI-EZ TOM 2.0 DART

Choose Cycle: WFI-EZ July-Dec 2019 Cycle Sampler: 180 Start Date: 7-1-19 End Date: 12-31-19 80/180 Completed

WFI-EZ Youth WFI-EZ Care Coordinator

Showing 6 of 180 Send Message

Client	Status	Manual Entry	Messages	Date Started	Date Completed	Actions
Donna Baldwin	Not Started	+ Enter Data Print	—	—	—	Send Message
Johnny Bravo	✓	+ Edit Data Print	2	7-1-19	7-14-19	Send Message
Velma Dinkley	Not Started	+ Enter Data Print	—	—	—	Send Message

Sample Report

