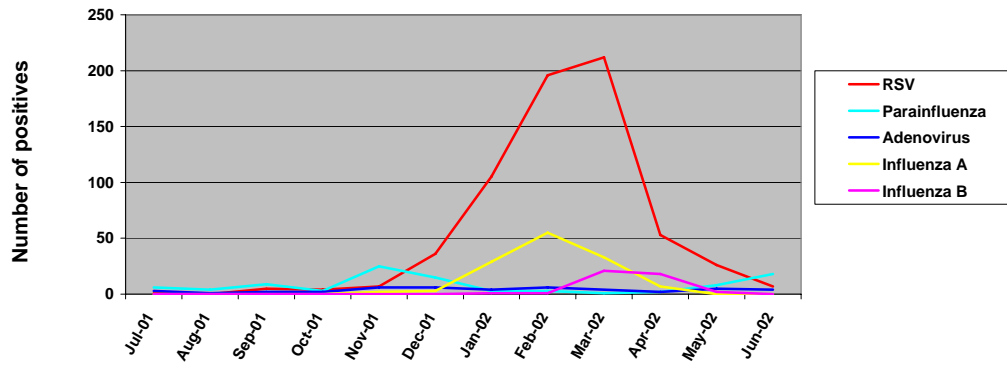


## 2001 - 2002 Respiratory Virus Detections



week ending	number tested	RSV	Parainfluenza	Adenovirus	Influenza A	Influenza B
07-Jul-01	38	0	2	2	0	0
14-Jul-01	41	0	2	1	0	0
21-Jul-01	44	1	1	0	0	0
28-Jul-01	36	0	1	0	0	0
04-Aug-01	47	0	1	0	0	0
11-Aug-01	24	0	0	0	0	0
18-Aug-01	31	0	2	0	0	0
25-Aug-01	45	0	1	1	0	0
01-Sep-01	29	1	3	0	0	0
08-Sep-01	45	0	2	2	0	0
15-Sep-01	34	0	0	0	0	0
22-Sep-01	65	1	3	0	0	0
29-Sep-01	56	3	1	0	0	0
06-Oct-01	57	0	0	0	0	0
13-Oct-01	67	0	0	1	0	0
20-Oct-01	64	3	3	1	0	0
27-Oct-01	53	1	0	0	0	0
03-Nov-01	51	1	4	1	0	0
10-Nov-01	51	2	7	1	0	0
17-Nov-01	99	3	6	3	2	0
24-Nov-01	73	1	8	1	0	0
01-Dec-01	64	3	5	0	0	0
08-Dec-01	67	2	3	1	0	0
15-Dec-01	73	8	3	3	0	0
22-Dec-01	70	12	2	2	0	0
29-Dec-01	69	11	2	0	3	0
05-Jan-02	96	20	0	1	2	0
12-Jan-02	91	24	1	2	6	0
19-Jan-02	85	20	2	1	4	0
26-Jan-02	131	41	0	0	17	1
02-Feb-02	154	42	1	1	14	0
09-Feb-02	165	40	2	1	18	1
16-Feb-02	151	57	0	2	9	0
23-Feb-02	157	57	0	2	14	0
02-Mar-02	155	50	0	1	13	1
09-Mar-02	183	59	0	1	8	3
16-Mar-02	141	39	1	0	7	3
23-Mar-02	165	30	0	0	2	7
30-Mar-02	126	34	0	2	3	7
06-Apr-02	123	19	0	0	1	9
13-Apr-02	124	12	2	0	2	2
20-Apr-02	98	10	0	1	4	6
27-Apr-02	78	12	0	1	0	1
04-May-02	73	8	1	1	0	1
11-May-02	83	4	4	1	0	1
18-May-02	77	9	1	0	0	0
25-May-02	79	5	2	3	0	0
01-Jun-02	45	1	0	2	0	0
08-Jun-02	38	1	1	1	0	0
15-Jun-02	65	4	5	0	0	0
22-Jun-02	54	0	6	1	0	0
29-Jun-02	40	1	6	0	0	0

Last Updated on: 3/2/2006  
 By Anne Cent  
 Email: [acent@u.washington.edu](mailto:acent@u.washington.edu)

month	RSV	Parainfluenza	Adenovirus	Influenza A	Influenza B
Jul-01	159	6	3	0	0
Aug-01	147	0	1	0	0
Sep-01	229	5	2	0	0
Oct-01	241	4	2	0	0
Nov-01	274	7	6	2	0
Dec-01	343	36	6	3	0
Jan-02	403	105	4	29	1
Feb-02	627	196	6	55	1
Mar-02	770	212	4	33	21
Apr-02	423	53	2	7	18
May-02	312	26	8	5	2
Jun-02	242	7	4	0	0